

Berger Realty

Since 1926



Berger Realty, Inc.
3160 Asbury Avenue
Ocean City, NJ 08226
1-877-237-4371 / 609-399-0076
info@bergerrealty.com



822 Adriatic, Atlantic City, NJ, 08401

Price \$650,000.00

PROPERTY DETAILS

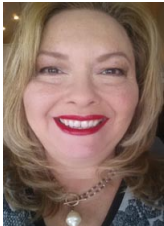
Total Rooms	
Bedrooms	0
Baths Full	0
Baths Half	0
Year Built	
Type	
Block Number	435
Listing #	584392
Taxes	8634.00

COMMENTS

DEVELOPER/INVESTOR ALERT! This lot is located at the intersection between N. Maryland Ave. and Adriatic Ave in Atlantic City and zoned RM-1, a multifamily district established primarily to foster family-oriented options. The property itself is generously sized, offering approximately 28,000 square feet on a clear Lot. Seller had previously set to develop 17 town house unit...

PROPERTY FEATURES

CONTACT



Ask for Theresa Maina
Berger Realty Inc
3160 Asbury Avenue, Ocean City
Call: 609-703-7725
Email to: tam@bergerrealty.com

Scan to see Property page.



Berger Realty

Since 1926



Berger Realty, Inc.
3160 Asbury Avenue
Ocean City, NJ 08226
1-877-237-4371 / 609-399-0076
info@bergerrealty.com



822 Adriatic, Atlantic City, NJ, 08401

Price \$650,000.00

PROPERTY DETAILS

Total Rooms	
Bedrooms	0
Baths Full	0
Baths Half	0
Year Built	
Type	
Block Number	435
Listing #	584392
Taxes	8634.00

COMMENTS

DEVELOPER/INVESTOR ALERT! This lot is located at the intersection between N. Maryland Ave. and Adriatic Ave in Atlantic City and zoned RM-1, a multifamily district established primarily to foster family-oriented options. The property itself is generously sized, offering approximately 28,000 square feet on a clear Lot. Seller had previously set to develop 17 town house unit...

PROPERTY FEATURES

CONTACT



Ask for Theresa Maina
Berger Realty Inc
3160 Asbury Avenue, Ocean City
Call: 609-703-7725
Email to: tam@bergerrealty.com

Scan to see Property page.

