



Berger Realty, Inc.  
3160 Asbury Avenue  
Ocean City, NJ 08226  
1-877-237-4371 / 609-399-0076  
info@bergerrealty.com



822 Adriatic, Atlantic City, NJ, 08401

Price \$650,000.00

#### PROPERTY DETAILS



Total Rooms	0
Bedrooms	0
Baths Full	0
Baths Half	0
Year Built	
Type	
Block Number	435
Listing #	584392
Taxes	8634.00

#### COMMENTS

**DEVELOPER/INVESTOR ALERT!** This lot is located at the intersection between N. Maryland Ave. and Adriatic Ave in Atlantic City and zoned RM-1, a multifamily district established primarily to foster family-oriented options. The property itself is generously sized, offering approximately 28,000 square feet on a clear Lot. Seller had previously set to develop 17 town house unit...

#### PROPERTY FEATURES

#### CONTACT



Ask for Sara Varani  
Berger Realty Inc  
3160 Asbury Avenue, Ocean City  
Call:  
Email to: sev@bergerrealty.com

Scan to see Property page.



Berger Realty, Inc.  
3160 Asbury Avenue  
Ocean City, NJ 08226  
1-877-237-4371 / 609-399-0076  
info@bergerrealty.com



822 Adriatic, Atlantic City, NJ, 08401

Price \$650,000.00

#### PROPERTY DETAILS



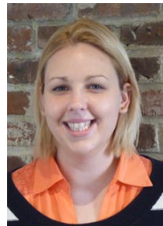
Total Rooms	0
Bedrooms	0
Baths Full	0
Baths Half	0
Year Built	
Type	
Block Number	435
Listing #	584392
Taxes	8634.00

#### COMMENTS

**DEVELOPER/INVESTOR ALERT!** This lot is located at the intersection between N. Maryland Ave. and Adriatic Ave in Atlantic City and zoned RM-1, a multifamily district established primarily to foster family-oriented options. The property itself is generously sized, offering approximately 28,000 square feet on a clear Lot. Seller had previously set to develop 17 town house unit...

#### PROPERTY FEATURES

#### CONTACT



Ask for Sara Varani  
Berger Realty Inc  
3160 Asbury Avenue, Ocean City  
Call:  
Email to: sev@bergerrealty.com

Scan to see Property page.

