

# Berger Realty

Since 1928



Berger Realty, Inc.  
3160 Asbury Avenue  
Ocean City, NJ 08226  
1-877-237-4371 / 609-399-0076  
info@bergerrealty.com



822 Adriatic, Atlantic City, NJ, 08401

Price \$650,000.00

### PROPERTY DETAILS

Total Rooms	
Bedrooms	0
Baths Full	0
Baths Half	0
Year Built	
Type	
Block Number	435
Listing #	584392
Taxes	8634.00

### COMMENTS

**DEVELOPER/INVESTOR ALERT!** This lot is located at the intersection between N. Maryland Ave. and Adriatic Ave in Atlantic City and zoned RM-1, a multifamily district established primarily to foster family-oriented options. The property itself is generously sized, offering approximately 28,000 square feet on a clear Lot. Seller had previously set to develop 17 town house unit...

### PROPERTY FEATURES

### CONTACT



Ask for Marki Lyn Warlow  
Berger Realty Inc  
3160 Asbury Avenue, Ocean City  
Call:  
Email to: mlw@bergerrealty.com

Scan to see Property page.



# Berger Realty

Since 1928



Berger Realty, Inc.  
3160 Asbury Avenue  
Ocean City, NJ 08226  
1-877-237-4371 / 609-399-0076  
info@bergerrealty.com



822 Adriatic, Atlantic City, NJ, 08401

Price \$650,000.00

### PROPERTY DETAILS

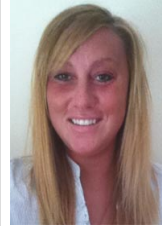
Total Rooms	
Bedrooms	0
Baths Full	0
Baths Half	0
Year Built	
Type	
Block Number	435
Listing #	584392
Taxes	8634.00

### COMMENTS

**DEVELOPER/INVESTOR ALERT!** This lot is located at the intersection between N. Maryland Ave. and Adriatic Ave in Atlantic City and zoned RM-1, a multifamily district established primarily to foster family-oriented options. The property itself is generously sized, offering approximately 28,000 square feet on a clear Lot. Seller had previously set to develop 17 town house unit...

### PROPERTY FEATURES

### CONTACT



Ask for Marki Lyn Warlow  
Berger Realty Inc  
3160 Asbury Avenue, Ocean City  
Call:  
Email to: mlw@bergerrealty.com

Scan to see Property page.

