

# Berger Realty

Since 1928



Berger Realty, Inc.  
3160 Asbury Avenue  
Ocean City, NJ 08226  
1-877-237-4371 / 609-399-0076  
info@bergerrealty.com



12-20, 36,38,42 Massachusetts, Atlantic City, NJ, 08401

Price \$675,000.00

### PROPERTY DETAILS

Total Rooms	
Bedrooms	0
Baths Full	0
Baths Half	0
Year Built	
Type	
Block Number	306
Listing #	584391
Taxes	9845.00



### COMMENTS

**DEVELOPER/INVESTOR ALERT!** There are 11 lots in total located between N. Massachusetts and N. Congress and Grammercy Pl. and Atlantic Ave. The lots available on this block all zoned RM-1, a multifamily district established primarily to foster family-oriented options. This is a prime area to build a fresh concept in this hot market with the boardwalk, Ocean Casino and beach ...

### PROPERTY FEATURES

### CONTACT



Ask for Lauren Greiner  
Berger Realty Inc  
3160 Asbury Avenue, Ocean City  
Call: 609-602-5960  
Email to: lmg@bergerrealty.com

Scan to see Property page.



# Berger Realty

Since 1928



Berger Realty, Inc.  
3160 Asbury Avenue  
Ocean City, NJ 08226  
1-877-237-4371 / 609-399-0076  
info@bergerrealty.com



12-20, 36,38,42 Massachusetts, Atlantic City, NJ, 08401

Price \$675,000.00

### PROPERTY DETAILS

Total Rooms	
Bedrooms	0
Baths Full	0
Baths Half	0
Year Built	
Type	
Block Number	306
Listing #	584391
Taxes	9845.00

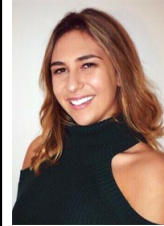


### COMMENTS

**DEVELOPER/INVESTOR ALERT!** There are 11 lots in total located between N. Massachusetts and N. Congress and Grammercy Pl. and Atlantic Ave. The lots available on this block all zoned RM-1, a multifamily district established primarily to foster family-oriented options. This is a prime area to build a fresh concept in this hot market with the boardwalk, Ocean Casino and beach ...

### PROPERTY FEATURES

### CONTACT



Ask for Lauren Greiner  
Berger Realty Inc  
3160 Asbury Avenue, Ocean City  
Call: 609-602-5960  
Email to: lmg@bergerrealty.com

Scan to see Property page.

