

Berger Realty

Since 1926



Berger Realty, Inc.
3160 Asbury Avenue
Ocean City, NJ 08226
1-877-237-4371 / 609-399-0076
info@bergerrealty.com



12-20, 36,38,42 Massachusetts, Atlantic City, NJ, 08401

Price \$675,000.00

PROPERTY DETAILS

| | |
|--------------|---------|
| Total Rooms | |
| Bedrooms | 0 |
| Baths Full | 0 |
| Baths Half | 0 |
| Year Built | |
| Type | |
| Block Number | 306 |
| Listing # | 584391 |
| Taxes | 9845.00 |

COMMENTS

DEVELOPER/INVESTOR ALERT! There are 11 lots in total located between N. Massachusetts and N. Congress and Grammercy Pl. and Atlantic Ave. The lots available on this block all zoned RM-1, a multifamily district established primarily to foster family-oriented options. This is a prime area to build a fresh concept in this hot market with the boardwalk, Ocean Casino and beach ...

PROPERTY FEATURES

CONTACT



Ask for Joyce McMahon
Berger Realty Inc
3160 Asbury Avenue, Ocean City
Call:
Email to: jmm@bergerrealty.com

Scan to see Property page.



Berger Realty

Since 1926



Berger Realty, Inc.
3160 Asbury Avenue
Ocean City, NJ 08226
1-877-237-4371 / 609-399-0076
info@bergerrealty.com



12-20, 36,38,42 Massachusetts, Atlantic City, NJ, 08401

Price \$675,000.00

PROPERTY DETAILS

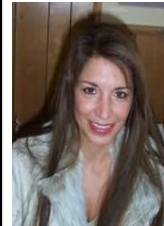
| | |
|--------------|---------|
| Total Rooms | |
| Bedrooms | 0 |
| Baths Full | 0 |
| Baths Half | 0 |
| Year Built | |
| Type | |
| Block Number | 306 |
| Listing # | 584391 |
| Taxes | 9845.00 |

COMMENTS

DEVELOPER/INVESTOR ALERT! There are 11 lots in total located between N. Massachusetts and N. Congress and Grammercy Pl. and Atlantic Ave. The lots available on this block all zoned RM-1, a multifamily district established primarily to foster family-oriented options. This is a prime area to build a fresh concept in this hot market with the boardwalk, Ocean Casino and beach ...

PROPERTY FEATURES

CONTACT



Ask for Joyce McMahon
Berger Realty Inc
3160 Asbury Avenue, Ocean City
Call:
Email to: jmm@bergerrealty.com

Scan to see Property page.

