

# Berger Realty

Since 1926



Berger Realty, Inc.  
3160 Asbury Avenue  
Ocean City, NJ 08226  
1-877-237-4371 / 609-399-0076  
info@bergerrealty.com



41 Congress, Atlantic City, NJ, 08401

Price \$65,000.00



### PROPERTY DETAILS

Total Rooms	
Bedrooms	0
Baths Full	0
Baths Half	0
Year Built	
Type	
Block Number	306
Listing #	584386
Taxes	335.00

### COMMENTS

**DEVELOPER/INVESTOR ALERT!** These two adjoining lots are offered together for sale, 41 N. Congress (18x65') and 508 Grammercy Place (24'x87'). There are additional lots available on this block all zoned RM-1, a multifamily district established primarily to foster family-oriented options. This is a prime area to build a fresh concept in this hot market with the boardw...

### PROPERTY FEATURES

### CONTACT



Ask for Patricia (Trish) Spengler  
Berger Realty Inc  
3160 Asbury Avenue, Ocean City  
Call: 609-425-9254  
Email to: pjs@bergerrealty.com

Scan to see Property page.



# Berger Realty

Since 1926

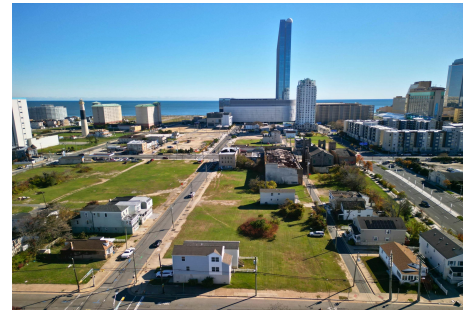


Berger Realty, Inc.  
3160 Asbury Avenue  
Ocean City, NJ 08226  
1-877-237-4371 / 609-399-0076  
info@bergerrealty.com



41 Congress, Atlantic City, NJ, 08401

Price \$65,000.00



### PROPERTY DETAILS

Total Rooms	
Bedrooms	0
Baths Full	0
Baths Half	0
Year Built	
Type	
Block Number	306
Listing #	584386
Taxes	335.00

### COMMENTS

**DEVELOPER/INVESTOR ALERT!** These two adjoining lots are offered together for sale, 41 N. Congress (18x65') and 508 Grammercy Place (24'x87'). There are additional lots available on this block all zoned RM-1, a multifamily district established primarily to foster family-oriented options. This is a prime area to build a fresh concept in this hot market with the boardw...

### PROPERTY FEATURES

### CONTACT



Ask for Patricia (Trish) Spengler  
Berger Realty Inc  
3160 Asbury Avenue, Ocean City  
Call: 609-425-9254  
Email to: pjs@bergerrealty.com

Scan to see Property page.

