



Berger Realty, Inc.
3160 Asbury Avenue
Ocean City, NJ 08226
1-877-237-4371 / 609-399-0076
info@bergerrealty.com



41 Congress, Atlantic City, NJ, 08401

Price \$65,000.00



PROPERTY DETAILS

Total Rooms	
Bedrooms	0
Baths Full	0
Baths Half	0
Year Built	
Type	
Block Number	306
Listing #	584386
Taxes	335.00

COMMENTS

DEVELOPER/INVESTOR ALERT! These two adjoining lots are offered together for sale, 41 N. Congress (18x65') and 508 Grammercy Place (24'x87'). There are additional lots available on this block all zoned RM-1, a multifamily district established primarily to foster family-oriented options. This is a prime area to build a fresh concept in this hot market with the boardw...

PROPERTY FEATURES

CONTACT



Ask for Donald Edwards
Berger Realty Inc
3160 Asbury Avenue, Ocean City
Call: 954-913-4477
Email to: dwe@bergerrealty.com

Scan to see Property page.

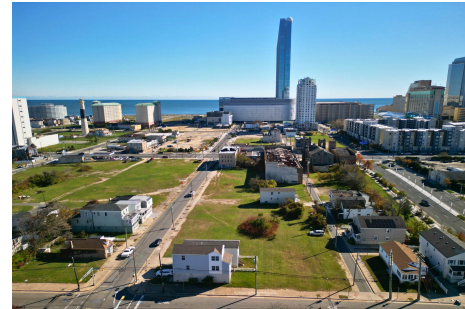


Berger Realty, Inc.
3160 Asbury Avenue
Ocean City, NJ 08226
1-877-237-4371 / 609-399-0076
info@bergerrealty.com



41 Congress, Atlantic City, NJ, 08401

Price \$65,000.00



PROPERTY DETAILS

Total Rooms	
Bedrooms	0
Baths Full	0
Baths Half	0
Year Built	
Type	
Block Number	306
Listing #	584386
Taxes	335.00

COMMENTS

DEVELOPER/INVESTOR ALERT! These two adjoining lots are offered together for sale, 41 N. Congress (18x65') and 508 Grammercy Place (24'x87'). There are additional lots available on this block all zoned RM-1, a multifamily district established primarily to foster family-oriented options. This is a prime area to build a fresh concept in this hot market with the boardw...

PROPERTY FEATURES

CONTACT



Ask for Donald Edwards
Berger Realty Inc
3160 Asbury Avenue, Ocean City
Call: 954-913-4477
Email to: dwe@bergerrealty.com

Scan to see Property page.

