

Berger Realty

Since 1926



Berger Realty, Inc.
3160 Asbury Avenue
Ocean City, NJ 08226
1-877-237-4371 / 609-399-0076
info@bergerrealty.com



414 Hobart, Atlantic City, NJ, 08401

Price \$75,000.00

PROPERTY DETAILS

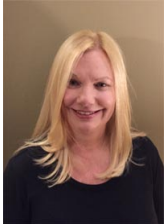
Total Rooms	
Bedrooms	0
Baths Full	0
Baths Half	0
Year Built	
Type	
Block Number	470
Listing #	584381
Taxes	1676.00

COMMENTS

BUILDABLE CLEAR LOT! Ready for development, this offering is the combination of 2 lots providing an additional access point to the property. The large 80'x100' lot is situated between Hobart and Trinity Avenues and offers an additional 25X95 adjacent lot with property access out to Hummock Ave. The property is zoned RM-1 a multifamily district established primarily t...

PROPERTY FEATURES

CONTACT



Ask for Dawn Warren
Berger Realty Inc
3160 Asbury Avenue, Ocean City
Call: 609-432-4966
Email to: dew@bergerrealty.com

Scan to see Property page.



Berger Realty

Since 1926



Berger Realty, Inc.
3160 Asbury Avenue
Ocean City, NJ 08226
1-877-237-4371 / 609-399-0076
info@bergerrealty.com



414 Hobart, Atlantic City, NJ, 08401

Price \$75,000.00

PROPERTY DETAILS

Total Rooms	
Bedrooms	0
Baths Full	0
Baths Half	0
Year Built	
Type	
Block Number	470
Listing #	584381
Taxes	1676.00

COMMENTS

BUILDABLE CLEAR LOT! Ready for development, this offering is the combination of 2 lots providing an additional access point to the property. The large 80'x100' lot is situated between Hobart and Trinity Avenues and offers an additional 25X95 adjacent lot with property access out to Hummock Ave. The property is zoned RM-1 a multifamily district established primarily t...

PROPERTY FEATURES

CONTACT



Ask for Dawn Warren
Berger Realty Inc
3160 Asbury Avenue, Ocean City
Call: 609-432-4966
Email to: dew@bergerrealty.com

Scan to see Property page.

