

# Berger Realty

Since 1928

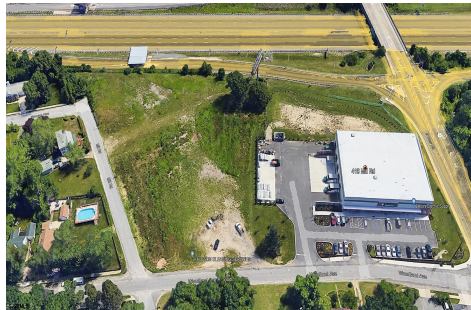


Berger Realty, Inc.  
3160 Asbury Avenue  
Ocean City, NJ 08226  
1-877-237-4371 / 609-399-0076  
info@bergerrealty.com



410 Mill Road, Pleasantville, NJ, 08232

Price \$500,000.00



### PROPERTY DETAILS

Total Rooms	
Bedrooms	0
Baths Full	0
Baths Half	0
Year Built	
Type	
Block Number	416
Listing #	584364
Taxes	18995.00

### COMMENTS

**PRIME LOCATION WITH BILLBOARD!** Located conveniently at Exit 5 on the AC Expressway, this central parcel offers easy access and high visibility, making it perfect for commercial development. Spanning over 2 acres, the prime, buildable lot is ready for construction and tailored development to suit various business needs. Included in the sale is a billboard with an existing l...

### PROPERTY FEATURES

### CONTACT



Ask for Sean McGinnis  
Berger Realty Inc  
3160 Asbury Avenue, Ocean City  
Call: 609-703-9955  
Email to: smc@bergerrealty.com

Scan to see Property page.



# Berger Realty

Since 1928



Berger Realty, Inc.  
3160 Asbury Avenue  
Ocean City, NJ 08226  
1-877-237-4371 / 609-399-0076  
info@bergerrealty.com



410 Mill Road, Pleasantville, NJ, 08232

Price \$500,000.00



### PROPERTY DETAILS

Total Rooms	
Bedrooms	0
Baths Full	0
Baths Half	0
Year Built	
Type	
Block Number	416
Listing #	584364
Taxes	18995.00

### COMMENTS

**PRIME LOCATION WITH BILLBOARD!** Located conveniently at Exit 5 on the AC Expressway, this central parcel offers easy access and high visibility, making it perfect for commercial development. Spanning over 2 acres, the prime, buildable lot is ready for construction and tailored development to suit various business needs. Included in the sale is a billboard with an existing l...

### PROPERTY FEATURES

### CONTACT



Ask for Sean McGinnis  
Berger Realty Inc  
3160 Asbury Avenue, Ocean City  
Call: 609-703-9955  
Email to: smc@bergerrealty.com

Scan to see Property page.

