

Berger Realty

Since 1926

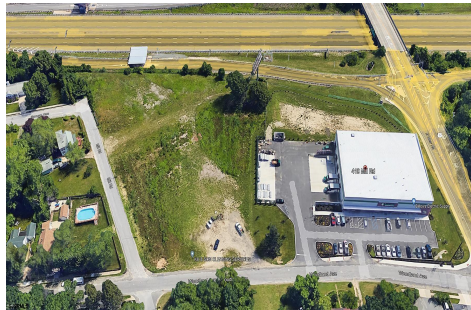


Berger Realty, Inc.
3160 Asbury Avenue
Ocean City, NJ 08226
1-877-237-4371 / 609-399-0076
info@bergerrealty.com



410 Mill Road, Pleasantville, NJ, 08232

Price \$500,000.00



PROPERTY DETAILS

| | |
|--------------|----------|
| Total Rooms | |
| Bedrooms | 0 |
| Baths Full | 0 |
| Baths Half | 0 |
| Year Built | |
| Type | |
| Block Number | 416 |
| Listing # | 584363 |
| Taxes | 18995.00 |

COMMENTS

PRIME LOCATION WITH BILLBOARD! Located conveniently at Exit 5 on the AC Expressway, this central parcel offers easy access and high visibility, making it perfect for commercial development. Spanning over 2 acres, the prime, buildable lot is ready for construction and tailored development to suit various business needs. Included in the sale is a billboard with an existing l...

PROPERTY FEATURES

| | | |
|-----------------|--------|--------------|
| OutsideFeatures | Water | Sewer |
| See Remarks | Public | Public Sewer |

CONTACT



Ask for Frank Shoemaker
Berger Realty Inc
3160 Asbury Avenue, Ocean City
Call:
Email to: fcs@bergerrealty.com

Scan to see Property page.



Berger Realty

Since 1926



Berger Realty, Inc.
3160 Asbury Avenue
Ocean City, NJ 08226
1-877-237-4371 / 609-399-0076
info@bergerrealty.com



410 Mill Road, Pleasantville, NJ, 08232

Price \$500,000.00



PROPERTY DETAILS

| | |
|--------------|----------|
| Total Rooms | |
| Bedrooms | 0 |
| Baths Full | 0 |
| Baths Half | 0 |
| Year Built | |
| Type | |
| Block Number | 416 |
| Listing # | 584363 |
| Taxes | 18995.00 |

COMMENTS

PRIME LOCATION WITH BILLBOARD! Located conveniently at Exit 5 on the AC Expressway, this central parcel offers easy access and high visibility, making it perfect for commercial development. Spanning over 2 acres, the prime, buildable lot is ready for construction and tailored development to suit various business needs. Included in the sale is a billboard with an existing l...

PROPERTY FEATURES

| | | |
|-----------------|--------|--------------|
| OutsideFeatures | Water | Sewer |
| See Remarks | Public | Public Sewer |

CONTACT



Ask for Frank Shoemaker
Berger Realty Inc
3160 Asbury Avenue, Ocean City
Call:
Email to: fcs@bergerrealty.com

Scan to see Property page.

