

Berger Realty

Since 1928

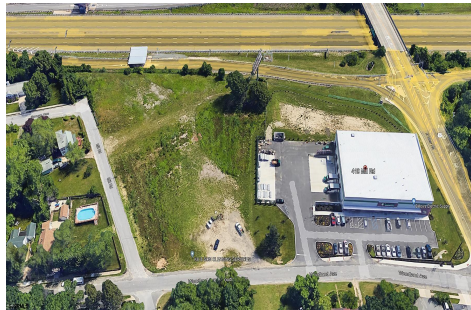


Berger Realty, Inc.
3160 Asbury Avenue
Ocean City, NJ 08226
1-877-237-4371 / 609-399-0076
info@bergerrealty.com



410 Mill Road, Pleasantville, NJ, 08232

Price \$500,000.00



PROPERTY DETAILS

Total Rooms	
Bedrooms	0
Baths Full	0
Baths Half	0
Year Built	
Type	
Block Number	416
Listing #	584363
Taxes	18995.00

COMMENTS

PRIME LOCATION WITH BILLBOARD! Located conveniently at Exit 5 on the AC Expressway, this central parcel offers easy access and high visibility, making it perfect for commercial development. Spanning over 2 acres, the prime, buildable lot is ready for construction and tailored development to suit various business needs. Included in the sale is a billboard with an existing l...

PROPERTY FEATURES

OutsideFeatures	Water	Sewer
See Remarks	Public	Public Sewer

CONTACT



Ask for Barbara Varacalli
Berger Realty Inc
3160 Asbury Avenue, Ocean City
Call: 609-602-4706
Email to: bav@bergerrealty.com

Scan to see Property page.



Berger Realty

Since 1928



Berger Realty, Inc.
3160 Asbury Avenue
Ocean City, NJ 08226
1-877-237-4371 / 609-399-0076
info@bergerrealty.com



410 Mill Road, Pleasantville, NJ, 08232

Price \$500,000.00



PROPERTY DETAILS

Total Rooms	
Bedrooms	0
Baths Full	0
Baths Half	0
Year Built	
Type	
Block Number	416
Listing #	584363
Taxes	18995.00

COMMENTS

PRIME LOCATION WITH BILLBOARD! Located conveniently at Exit 5 on the AC Expressway, this central parcel offers easy access and high visibility, making it perfect for commercial development. Spanning over 2 acres, the prime, buildable lot is ready for construction and tailored development to suit various business needs. Included in the sale is a billboard with an existing l...

PROPERTY FEATURES

OutsideFeatures	Water	Sewer
See Remarks	Public	Public Sewer

CONTACT



Ask for Barbara Varacalli
Berger Realty Inc
3160 Asbury Avenue, Ocean City
Call: 609-602-4706
Email to: bav@bergerrealty.com

Scan to see Property page.

