

# Berger Realty

Since 1928



Berger Realty, Inc.  
3160 Asbury Avenue  
Ocean City, NJ 08226  
1-877-237-4371 / 609-399-0076  
info@bergerrealty.com



2415 Bayberry, 2415, Mays Landing, NJ, 08330

Price \$125,000.00

### PROPERTY DETAILS

Total Rooms	4
Bedrooms	2
Baths Full	1
Baths Half	0
Year Built	1986
Type	Condo
Block Number	1135.05
Listing #	584298
Taxes	1364.00

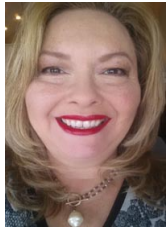
### COMMENTS

**HANDYMAN SPECIAL!!** Bring your VISION and Creativity to complete this 2 Bedroom, 1 Bath, 2nd floor, End Unit Condo located in the Woodlands! The Nicely-sized bedrooms feature ample closet space with pull-down attic in the Primary bedroom for added storage option. Open Kitchen to dining area and living room area. Slider leads to the deck which features the mechanicals closet...

### PROPERTY FEATURES

ParkingGarage	InteriorFeatures	Heating	Water
None	Pets Allowed	Electric	Public Water
		Forced Air	
Sewer			
Public Sewer			

### CONTACT



Ask for Theresa Maina  
Berger Realty Inc  
3160 Asbury Avenue, Ocean City  
Call: 609-703-7725  
Email to: tam@bergerrealty.com

Scan to see Property page.



# Berger Realty

Since 1928



Berger Realty, Inc.  
3160 Asbury Avenue  
Ocean City, NJ 08226  
1-877-237-4371 / 609-399-0076  
info@bergerrealty.com



2415 Bayberry, 2415, Mays Landing, NJ, 08330

Price \$125,000.00

### PROPERTY DETAILS

Total Rooms	4
Bedrooms	2
Baths Full	1
Baths Half	0
Year Built	1986
Type	Condo
Block Number	1135.05
Listing #	584298
Taxes	1364.00

### COMMENTS

**HANDYMAN SPECIAL!!** Bring your VISION and Creativity to complete this 2 Bedroom, 1 Bath, 2nd floor, End Unit Condo located in the Woodlands! The Nicely-sized bedrooms feature ample closet space with pull-down attic in the Primary bedroom for added storage option. Open Kitchen to dining area and living room area. Slider leads to the deck which features the mechanicals closet...

### PROPERTY FEATURES

ParkingGarage	InteriorFeatures	Heating	Water
None	Pets Allowed	Electric	Public Water
		Forced Air	
Sewer			
Public Sewer			

### CONTACT



Ask for Theresa Maina  
Berger Realty Inc  
3160 Asbury Avenue, Ocean City  
Call: 609-703-7725  
Email to: tam@bergerrealty.com

Scan to see Property page.

