

Berger Realty

Since 1926



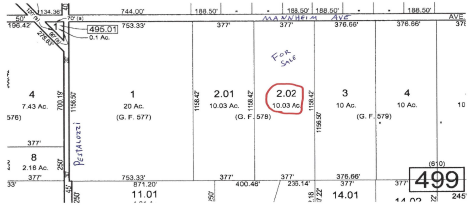
Berger Realty, Inc.
3160 Asbury Avenue
Ocean City, NJ 08226
1-877-237-4371 / 609-399-0076
info@bergerrealty.com



222 Mannheim, Germania, NJ, 08215

Price \$199,000.00

PROPERTY DETAILS



Total Rooms	
Bedrooms	0
Baths Full	0
Baths Half	0
Year Built	
Type	
Block Number	2.02
Listing #	584246
Taxes	2937.00

COMMENTS

MULTIPLE OFFERS HAVE BEEN RECEIVED - SELLERS ARE CALLING FOR A HIGEST & BEST BY Tuesday APRIL 23RD at 5PM Buildable 10 acres in the Germania section of Galloway Township. 377' of frontage on Mannheim Ave just north of Pestalozzi St...

PROPERTY FEATURES

CONTACT



Ask for Ben Duncan
Berger Realty Inc
3160 Asbury Avenue, Ocean City
Call: 609-600-7531
Email to: bmd@bergerrealty.com

Scan to see Property page.



Berger Realty

Since 1926



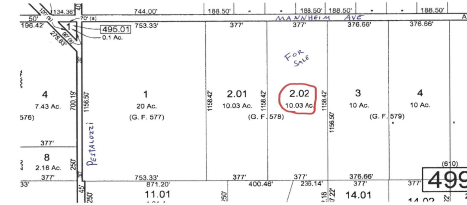
Berger Realty, Inc.
3160 Asbury Avenue
Ocean City, NJ 08226
1-877-237-4371 / 609-399-0076
info@bergerrealty.com



222 Mannheim, Germania, NJ, 08215

Price \$199,000.00

PROPERTY DETAILS



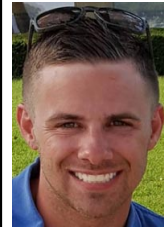
Total Rooms	
Bedrooms	0
Baths Full	0
Baths Half	0
Year Built	
Type	
Block Number	2.02
Listing #	584246
Taxes	2937.00

COMMENTS

MULTIPLE OFFERS HAVE BEEN RECEIVED - SELLERS ARE CALLING FOR A HIGEST & BEST BY Tuesday APRIL 23RD at 5PM Buildable 10 acres in the Germania section of Galloway Township. 377' of frontage on Mannheim Ave just north of Pestalozzi St...

PROPERTY FEATURES

CONTACT



Ask for Ben Duncan
Berger Realty Inc
3160 Asbury Avenue, Ocean City
Call: 609-600-7531
Email to: bmd@bergerrealty.com

Scan to see Property page.

