

Berger Realty

Since 1926



Berger Realty, Inc.
3160 Asbury Avenue
Ocean City, NJ 08226
1-877-237-4371 / 609-399-0076
info@bergerrealty.com



511 Pacific, Atlantic City, NJ, 08401

Price \$1,000,000.00

Ideally Positioned Development Site Surrounded by Investment Activity!!



PROPERTY DETAILS

Total Rooms	0
Bedrooms	0
Baths Full	0
Baths Half	0
Year Built	
Type	
Block Number	131
Listing #	584236
Taxes	17896.00

COMMENTS

Three contiguous lots that make up the entire frontage of Pacific Ave between South Connecticut and Congress for a total of 17,129 square feet of land with a 3900 sqft two story building standing on one of the corner lots. One large fenced in corner lot makes up the busy corner intersection at Pacific and S. Connecticut which is the feeder street to the new Ocean Resort Ca...

PROPERTY FEATURES

CONTACT



Ask for Lauren Greiner
Berger Realty Inc
3160 Asbury Avenue, Ocean City
Call: 609-602-5960
Email to: lmg@bergerrealty.com

Scan to see Property page.



Berger Realty

Since 1926



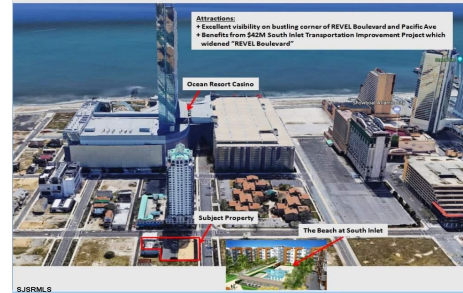
Berger Realty, Inc.
3160 Asbury Avenue
Ocean City, NJ 08226
1-877-237-4371 / 609-399-0076
info@bergerrealty.com



511 Pacific, Atlantic City, NJ, 08401

Price \$1,000,000.00

Ideally Positioned Development Site Surrounded by Investment Activity!!



PROPERTY DETAILS

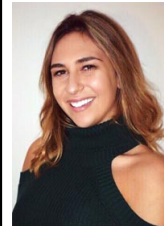
Total Rooms	0
Bedrooms	0
Baths Full	0
Baths Half	0
Year Built	
Type	
Block Number	131
Listing #	584236
Taxes	17896.00

COMMENTS

Three contiguous lots that make up the entire frontage of Pacific Ave between South Connecticut and Congress for a total of 17,129 square feet of land with a 3900 sqft two story building standing on one of the corner lots. One large fenced in corner lot makes up the busy corner intersection at Pacific and S. Connecticut which is the feeder street to the new Ocean Resort Ca...

PROPERTY FEATURES

CONTACT



Ask for Lauren Greiner
Berger Realty Inc
3160 Asbury Avenue, Ocean City
Call: 609-602-5960
Email to: lmg@bergerrealty.com

Scan to see Property page.

