

# Berger Realty

Since 1928



Berger Realty, Inc.  
3160 Asbury Avenue  
Ocean City, NJ 08226  
1-877-237-4371 / 609-399-0076  
info@bergerrealty.com



2 Pharo Ln, Cape May, NJ, 08204

Price \$3,890,000.00



### PROPERTY DETAILS

Total Rooms	12
Bedrooms	4
Baths Full	2
Baths Half	2
Year Built	2016
Type	Single Family
Block Number	1061.04
Listing #	584108
Taxes	9168.00

### COMMENTS

Welcome to 2 Pharo, a 4-story, single family property, iconic to Cape May's Marina District and the surrounding waterfront enclave known as Spicers Creek. This unique property offers the opportunity to enjoy water views from each floor, spanning North, South, East and West, from sunrise to sunset. Planning by Fenwick Architects with steel posts and beams, brick and cedar ...

### PROPERTY FEATURES

Exterior	OutsideFeatures	ParkingGarage	OtherRooms
Brick	Deck	Attached Garage	Den/TV Room
Cedar	Patio	Auto Door Opener	Dining Room
Concrete	Sidewalks	See Remarks	Great Room
Masonry/Block			Laundry/Utility Room
Shingle			Loft
Wood			
InteriorFeatures	AppliancesIncluded	AlsoIncluded	Heating
Bar	Burglar Alarm	Blinds	Forced Air
Carbon Monoxide	Dishwasher	Curtains	Gas-Natural
Detector	Disposal	Drapes	Multi-Zoned
Cathedral Ceiling	Dryer	Furnished	
Elevator	Microwave	Rugs	
Kitchen Center Island	Refrigerator	See Remarks	
Security System	Washer	Shades	
Smoke/Fire Alarm			
Storage			
Walk In Closet			
Cooling	Water	Sewer	
Central	Public	Public Sewer	
Multi-Zoned			

### CONTACT

Ask for Theresa Maina  
Berger Realty Inc  
3160 Asbury Avenue, Ocean City  
Call: 609-703-7725

Scan to see Property page.

# Berger Realty

Since 1928



Berger Realty, Inc.  
3160 Asbury Avenue  
Ocean City, NJ 08226  
1-877-237-4371 / 609-399-0076  
info@bergerrealty.com



2 Pharo Ln, Cape May, NJ, 08204

Price \$3,890,000.00



### PROPERTY DETAILS

Total Rooms	12
Bedrooms	4
Baths Full	2
Baths Half	2
Year Built	2016
Type	Single Family
Block Number	1061.04
Listing #	584108
Taxes	9168.00

### COMMENTS

Welcome to 2 Pharo, a 4-story, single family property, iconic to Cape May's Marina District and the surrounding waterfront enclave known as Spicers Creek. This unique property offers the opportunity to enjoy water views from each floor, spanning North, South, East and West, from sunrise to sunset. Planning by Fenwick Architects with steel posts and beams, brick and cedar ...

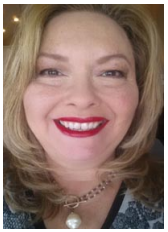
### PROPERTY FEATURES

Exterior	OutsideFeatures	ParkingGarage	OtherRooms
Brick	Deck	Attached Garage	Den/TV Room
Cedar	Patio	Auto Door Opener	Dining Room
Concrete	Sidewalks	See Remarks	Great Room
Masonry/Block			Laundry/Utility Room
Shingle			Loft
Wood			
InteriorFeatures	AppliancesIncluded	AlsoIncluded	Heating
Bar	Burglar Alarm	Blinds	Forced Air
Carbon Monoxide	Dishwasher	Curtains	Gas-Natural
Detector	Disposal	Drapes	Multi-Zoned
Cathedral Ceiling	Dryer	Furnished	
Elevator	Microwave	Rugs	
Kitchen Center Island	Refrigerator	See Remarks	
Security System	Washer	Shades	
Smoke/Fire Alarm			
Storage			
Walk In Closet			
Cooling	Water	Sewer	
Central	Public	Public Sewer	
Multi-Zoned			

### CONTACT

Ask for Theresa Maina  
Berger Realty Inc  
3160 Asbury Avenue, Ocean City  
Call: 609-703-7725

Scan to see Property page.



Email to: [tam@bergerrealty.com](mailto:tam@bergerrealty.com)



Email to: [tam@bergerrealty.com](mailto:tam@bergerrealty.com)

