

# Berger Realty

Since 1928



Berger Realty, Inc.  
3160 Asbury Avenue  
Ocean City, NJ 08226  
1-877-237-4371 / 609-399-0076  
info@bergerrealty.com



207 Northfield, Northfield, NJ, 08225

Price \$172,000.00

### PROPERTY DETAILS

Total Rooms	
Bedrooms	0
Baths Full	0
Baths Half	0
Year Built	
Type	
Block Number	106
Listing #	583831
Taxes	



### COMMENTS

Rare opportunity to build on a quiet street in the heart of Northfield. This property will need to be sub divided at the buyers expense. Currently 1 lot with potential to be divided into 2 buildable lots. Property is currently tax exempt, seller will sell and convey a portion of Lot 8 approx size is 150' frontage by 200' in depth. Taxes TBD once subdivided. Great locatio...

### PROPERTY FEATURES

### CONTACT



Ask for Evelyn "Evie" Schweibinz  
Berger Realty Inc  
3160 Asbury Avenue, Ocean City  
Call:  
Email to: [ems@bergerrealty.com](mailto:ems@bergerrealty.com)

Scan to see Property page.



# Berger Realty

Since 1928



Berger Realty, Inc.  
3160 Asbury Avenue  
Ocean City, NJ 08226  
1-877-237-4371 / 609-399-0076  
info@bergerrealty.com



207 Northfield, Northfield, NJ, 08225

Price \$172,000.00

### PROPERTY DETAILS

Total Rooms	
Bedrooms	0
Baths Full	0
Baths Half	0
Year Built	
Type	
Block Number	106
Listing #	583831
Taxes	

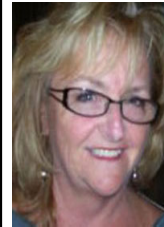


### COMMENTS

Rare opportunity to build on a quiet street in the heart of Northfield. This property will need to be sub divided at the buyers expense. Currently 1 lot with potential to be divided into 2 buildable lots. Property is currently tax exempt, seller will sell and convey a portion of Lot 8 approx size is 150' frontage by 200' in depth. Taxes TBD once subdivided. Great locatio...

### PROPERTY FEATURES

### CONTACT



Ask for Evelyn "Evie" Schweibinz  
Berger Realty Inc  
3160 Asbury Avenue, Ocean City  
Call:  
Email to: [ems@bergerrealty.com](mailto:ems@bergerrealty.com)

Scan to see Property page.

