

# Berger Realty

Since 1926

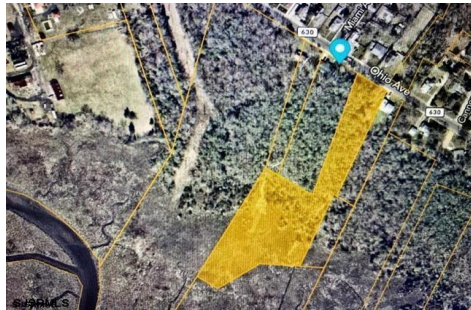


Berger Realty, Inc.  
3160 Asbury Avenue  
Ocean City, NJ 08226  
1-877-237-4371 / 609-399-0076  
info@bergerrealty.com



00 Ohio Ave Ave Ave Ave, Absecon, NJ, 08201

Price \$25,000.00



### PROPERTY DETAILS

Total Rooms	
Bedrooms	0
Baths Full	0
Baths Half	0
Year Built	
Type	
Block Number	231
Listing #	583387
Taxes	321.00

### COMMENTS

*Partially Buildable Lot. Frontage of 136 (see attached pictures for lot size/details). Buyer must contact state and order wetlands deliniation to see the EXACT location where wetlands begin in the rear section of the lot...*

### PROPERTY FEATURES

### CONTACT

Berger Realty Inc  
3160 Asbury Ave.  
Ocean City, NJ 08226  
Call: (609) 399-0076  
Email to: info@bergerrealty.com  
Web: www.bergerrealty.com

Scan to see Property page.



# Berger Realty

Since 1926

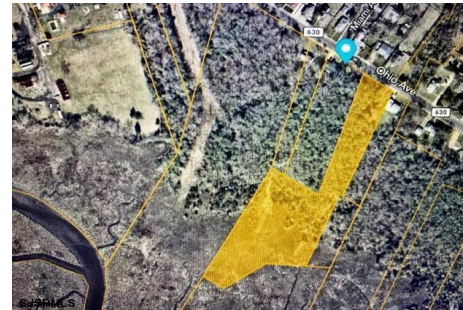


Berger Realty, Inc.  
3160 Asbury Avenue  
Ocean City, NJ 08226  
1-877-237-4371 / 609-399-0076  
info@bergerrealty.com



00 Ohio Ave Ave Ave Ave, Absecon, NJ, 08201

Price \$25,000.00



### PROPERTY DETAILS

Total Rooms	
Bedrooms	0
Baths Full	0
Baths Half	0
Year Built	
Type	
Block Number	231
Listing #	583387
Taxes	321.00

### COMMENTS

*Partially Buildable Lot. Frontage of 136 (see attached pictures for lot size/details). Buyer must contact state and order wetlands deliniation to see the EXACT location where wetlands begin in the rear section of the lot...*

### PROPERTY FEATURES

### CONTACT

Berger Realty Inc  
3160 Asbury Ave.  
Ocean City, NJ 08226  
Call: (609) 399-0076  
Email to: info@bergerrealty.com  
Web: www.bergerrealty.com

Scan to see Property page.

