

Berger Realty

Since 1928

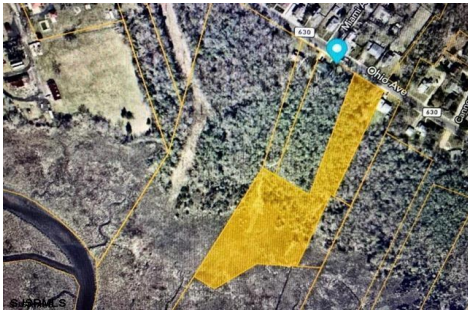


Berger Realty, Inc.
3160 Asbury Avenue
Ocean City, NJ 08226
1-877-237-4371 / 609-399-0076
info@bergerrealty.com



00 Ohio Ave Ave Ave Ave, Absecon, NJ, 08201

Price \$25,000.00



PROPERTY DETAILS

Total Rooms	
Bedrooms	0
Baths Full	0
Baths Half	0
Year Built	
Type	
Block Number	231
Listing #	583387
Taxes	321.00

COMMENTS

Partially Buildable Lot. Frontage of 136 (see attached pictures for lot size/details). Buyer must contact state and order wetlands deliniation to see the EXACT location where wetlands begin in the rear section of the lot...

PROPERTY FEATURES

CONTACT



Ask for Ken Sedberry
Berger Realty Inc
3160 Asbury Avenue, Ocean City
Call: 609-442-3850
Email to: kas@bergerrealty.com
http://www.buytheshore.com

Scan to see Property page.



Berger Realty

Since 1928

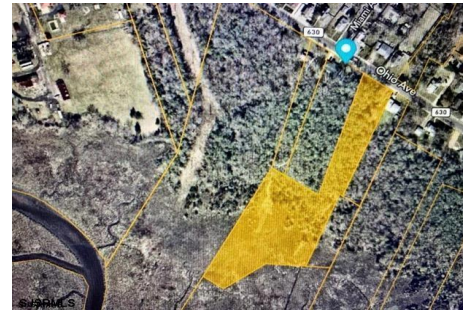


Berger Realty, Inc.
3160 Asbury Avenue
Ocean City, NJ 08226
1-877-237-4371 / 609-399-0076
info@bergerrealty.com



00 Ohio Ave Ave Ave Ave, Absecon, NJ, 08201

Price \$25,000.00



PROPERTY DETAILS

Total Rooms	
Bedrooms	0
Baths Full	0
Baths Half	0
Year Built	
Type	
Block Number	231
Listing #	583387
Taxes	321.00

COMMENTS

Partially Buildable Lot. Frontage of 136 (see attached pictures for lot size/details). Buyer must contact state and order wetlands deliniation to see the EXACT location where wetlands begin in the rear section of the lot...

PROPERTY FEATURES

CONTACT



Ask for Ken Sedberry
Berger Realty Inc
3160 Asbury Avenue, Ocean City
Call: 609-442-3850
Email to: kas@bergerrealty.com
http://www.buytheshore.com

Scan to see Property page.

