

# Berger Realty

Since 1926



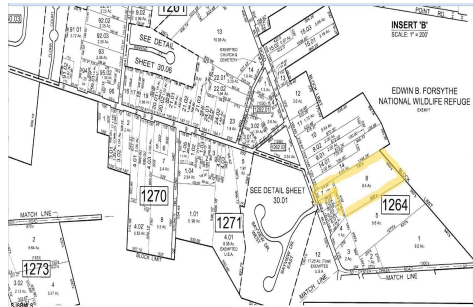
Ocean 17  
1670 Boardwalk  
Ocean City, NJ 08226  
609-391-0500

oc17@BergerRealty.com



905 Moss Mill, Leeds Point, NJ, 08205

Price \$159,900.00



### PROPERTY DETAILS

<b>Total Rooms</b>	0
<b>Bedrooms</b>	0
<b>Baths Full</b>	0
<b>Baths Half</b>	0
<b>Year Built</b>	
<b>Type</b>	
<b>Block Number</b>	1264
<b>Listing #</b>	583350
<b>Taxes</b>	3519.00

### COMMENTS

**\*\*NEW LISTING!\*\*** 10.24 ROLLING WOODED ACRES!! Appears to meet ALL TOWNSHIP REQUIREMENTS for a 2 LOT SUBDIVISION or keep it the way it is and BUILD YOUR DREAM ESTATE!! \ "JUST ABSOLUTLEY BEAUTIFUL PROPERTY!! BACKS UP TO THE Wildlife Refuge AS WELL!\ " Walking distance to OYSTER Creek RESTAURANT, boat access a mile away at Scotts Landing/Edwin Forsythe Wildlife Refuge boat ra...

### PROPERTY FEATURES

### CONTACT



Ask for Kevin Laskowski  
Berger Realty Inc  
1670 Boardwalk, Ocean City  
Call: 267-432-1248  
Email to: kml@bergerrealty.com

Scan to see Property page.



# Berger Realty

Since 1926



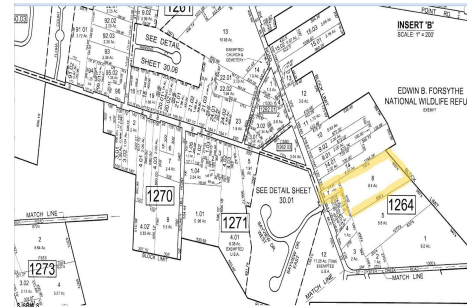
Ocean 17  
1670 Boardwalk  
Ocean City, NJ 08226  
609-391-0500

oc17@BergerRealty.com



905 Moss Mill, Leeds Point, NJ, 08205

Price \$159,900.00



### PROPERTY DETAILS

<b>Total Rooms</b>	0
<b>Bedrooms</b>	0
<b>Baths Full</b>	0
<b>Baths Half</b>	0
<b>Year Built</b>	
<b>Type</b>	
<b>Block Number</b>	1264
<b>Listing #</b>	583350
<b>Taxes</b>	3519.00

### COMMENTS

**\*\*NEW LISTING!\*\*** 10.24 ROLLING WOODED ACRES!! Appears to meet ALL TOWNSHIP REQUIREMENTS for a 2 LOT SUBDIVISION or keep it the way it is and BUILD YOUR DREAM ESTATE!! \ "JUST ABSOLUTLEY BEAUTIFUL PROPERTY!! BACKS UP TO THE Wildlife Refuge AS WELL!\ " Walking distance to OYSTER Creek RESTAURANT, boat access a mile away at Scotts Landing/Edwin Forsythe Wildlife Refuge boat ra...

### PROPERTY FEATURES

### CONTACT



Ask for Kevin Laskowski  
Berger Realty Inc  
1670 Boardwalk, Ocean City  
Call: 267-432-1248  
Email to: kml@bergerrealty.com

Scan to see Property page.

