

Berger Realty

Since 1926

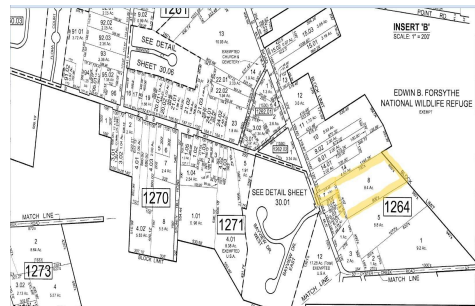


Berger Realty, Inc
1330 Bay Avenue
Ocean City, NJ 08226
609-391-1330/609-391-1300
info@bergerrealty.com



905 Moss Mill, Leeds Point, NJ, 08205

Price \$159,900.00



PROPERTY DETAILS

| | |
|--------------|---------|
| Total Rooms | |
| Bedrooms | 0 |
| Baths Full | 0 |
| Baths Half | 0 |
| Year Built | |
| Type | |
| Block Number | 1264 |
| Listing # | 583350 |
| Taxes | 3519.00 |

COMMENTS

****NEW LISTING!**** 10.24 ROLLING WOODED ACRES!! Appears to meet ALL TOWNSHIP REQUIREMENTS for a 2 LOT SUBDIVISION or keep it the way it is and BUILD YOUR DREAM ESTATE!! \ "JUST ABSOLUTLEY BEAUTIFUL PROPERTY!! BACKS UP TO THE Wildlife Refuge AS WELL!\ " Walking distance to OYSTER Creek RESTAURANT, boat access a mile away at Scotts Landing/Edwin Forsythe Wildlife Refuge boat ra...

PROPERTY FEATURES

CONTACT



Ask for Joan S. Spencer
Berger Realty Inc
1330 Bay Avenue, Ocean City
Call: 609-204-3027
Email to: jss@bergerrealty.com

Scan to see Property page.



Berger Realty

Since 1926

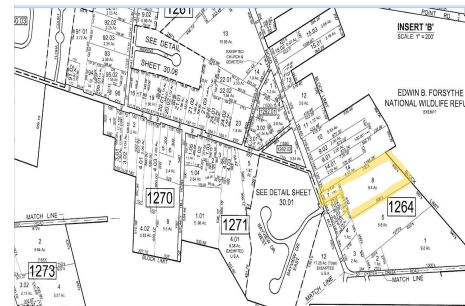


Berger Realty, Inc
1330 Bay Avenue
Ocean City, NJ 08226
609-391-1330/609-391-1300
info@bergerrealty.com



905 Moss Mill, Leeds Point, NJ, 08205

Price \$159,900.00



PROPERTY DETAILS

| | |
|--------------|---------|
| Total Rooms | |
| Bedrooms | 0 |
| Baths Full | 0 |
| Baths Half | 0 |
| Year Built | |
| Type | |
| Block Number | 1264 |
| Listing # | 583350 |
| Taxes | 3519.00 |

COMMENTS

****NEW LISTING!**** 10.24 ROLLING WOODED ACRES!! Appears to meet ALL TOWNSHIP REQUIREMENTS for a 2 LOT SUBDIVISION or keep it the way it is and BUILD YOUR DREAM ESTATE!! \ "JUST ABSOLUTLEY BEAUTIFUL PROPERTY!! BACKS UP TO THE Wildlife Refuge AS WELL!\ " Walking distance to OYSTER Creek RESTAURANT, boat access a mile away at Scotts Landing/Edwin Forsythe Wildlife Refuge boat ra...

PROPERTY FEATURES

CONTACT



Ask for Joan S. Spencer
Berger Realty Inc
1330 Bay Avenue, Ocean City
Call: 609-204-3027
Email to: jss@bergerrealty.com

Scan to see Property page.

