

# Berger Realty

Since 1926

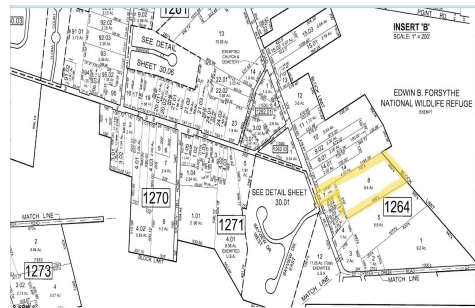


Berger Realty, Inc  
1330 Bay Avenue  
Ocean City, NJ 08226  
609-391-1330/609-391-1300  
info@bergerrealty.com



905 Moss Mill, Leeds Point, NJ, 08205

Price \$159,900.00



### PROPERTY DETAILS

Total Rooms	
Bedrooms	0
Baths Full	0
Baths Half	0
Year Built	
Type	
Block Number	1264
Listing #	583350
Taxes	3519.00

### COMMENTS

**\*\*NEW LISTING!\*\*** 10.24 ROLLING WOODED ACRES!! Appears to meet ALL TOWNSHIP REQUIREMENTS for a 2 LOT SUBDIVISION or keep it the way it is and BUILD YOUR DREAM ESTATE!! \ "JUST ABSOLUTLEY BEAUTIFUL PROPERTY!! BACKS UP TO THE Wildlife Refuge AS WELL!\ " Walking distance to OYSTER Creek RESTAURANT, boat access a mile away at Scotts Landing/Edwin Forsythe Wildlife Refuge boat ra...

### PROPERTY FEATURES

### CONTACT



Ask for Adelaide Misal  
Berger Realty Inc  
1330 Bay Avenue, Ocean City  
Call: 609-204-4084  
Email to: ahm@bergerrealty.com

Scan to see Property page.



# Berger Realty

Since 1926

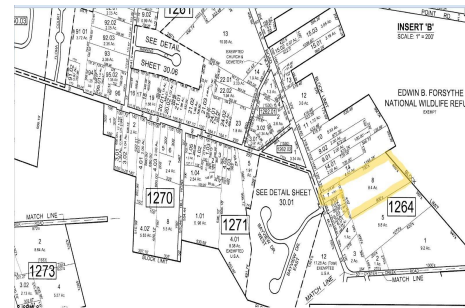


Berger Realty, Inc  
1330 Bay Avenue  
Ocean City, NJ 08226  
609-391-1330/609-391-1300  
info@bergerrealty.com



905 Moss Mill, Leeds Point, NJ, 08205

Price \$159,900.00



### PROPERTY DETAILS

Total Rooms	
Bedrooms	0
Baths Full	0
Baths Half	0
Year Built	
Type	
Block Number	1264
Listing #	583350
Taxes	3519.00

### COMMENTS

**\*\*NEW LISTING!\*\*** 10.24 ROLLING WOODED ACRES!! Appears to meet ALL TOWNSHIP REQUIREMENTS for a 2 LOT SUBDIVISION or keep it the way it is and BUILD YOUR DREAM ESTATE!! \ "JUST ABSOLUTLEY BEAUTIFUL PROPERTY!! BACKS UP TO THE Wildlife Refuge AS WELL!\ " Walking distance to OYSTER Creek RESTAURANT, boat access a mile away at Scotts Landing/Edwin Forsythe Wildlife Refuge boat ra...

### PROPERTY FEATURES

### CONTACT



Ask for Adelaide Misal  
Berger Realty Inc  
1330 Bay Avenue, Ocean City  
Call: 609-204-4084  
Email to: ahm@bergerrealty.com

Scan to see Property page.

