

# Berger Realty

Since 1926



Berger Realty, Inc  
1330 Bay Avenue  
Ocean City, NJ 08226  
609-391-1330/609-391-1300  
info@bergerrealty.com



357 White Horse, Hammonton, NJ, 08037

Price \$364,900.00

## PROPERTY DETAILS

|              |          |
|--------------|----------|
| Total Rooms  |          |
| Bedrooms     | 0        |
| Baths Full   | 0        |
| Baths Half   | 0        |
| Year Built   |          |
| Type         |          |
| Block Number | 3901     |
| Listing #    | 583053   |
| Taxes        | 10312.00 |

## COMMENTS

Prime commercial Property For Sale. Primary building is 2,050 +/- square feet. Currently fit out for an animal clinic. Secondary building is about 600 +/- sf grooming center. 237 feet of frontage. Zoned Highway Business. Located beside Gino Pinto Plaza (tenants include Orozco Orthopedics, Corda Pain Management, Dr. Falcone, T.E.A.M. Physical Therapy), Stone Vision M...

## PROPERTY FEATURES

## CONTACT



Ask for Joanne Kelly  
Berger Realty Inc  
1330 Bay Avenue, Ocean City  
Call: 609-425-2106  
Email to: jmk@bergerrealty.com

Scan to see Property page.



# Berger Realty

Since 1926



Berger Realty, Inc  
1330 Bay Avenue  
Ocean City, NJ 08226  
609-391-1330/609-391-1300  
info@bergerrealty.com



357 White Horse, Hammonton, NJ, 08037

Price \$364,900.00

## PROPERTY DETAILS

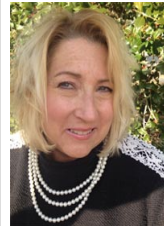
|              |          |
|--------------|----------|
| Total Rooms  |          |
| Bedrooms     | 0        |
| Baths Full   | 0        |
| Baths Half   | 0        |
| Year Built   |          |
| Type         |          |
| Block Number | 3901     |
| Listing #    | 583053   |
| Taxes        | 10312.00 |

## COMMENTS

Prime commercial Property For Sale. Primary building is 2,050 +/- square feet. Currently fit out for an animal clinic. Secondary building is about 600 +/- sf grooming center. 237 feet of frontage. Zoned Highway Business. Located beside Gino Pinto Plaza (tenants include Orozco Orthopedics, Corda Pain Management, Dr. Falcone, T.E.A.M. Physical Therapy), Stone Vision M...

## PROPERTY FEATURES

## CONTACT



Ask for Joanne Kelly  
Berger Realty Inc  
1330 Bay Avenue, Ocean City  
Call: 609-425-2106  
Email to: jmk@bergerrealty.com

Scan to see Property page.

