

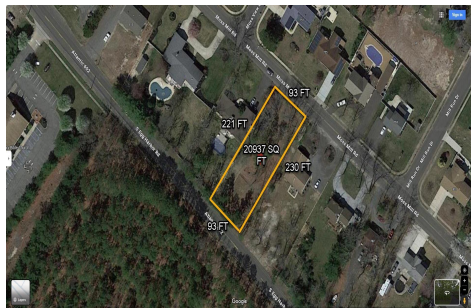


Berger Realty, Inc.  
3160 Asbury Avenue  
Ocean City, NJ 08226  
1-877-237-4371 / 609-399-0076  
info@bergerrealty.com



758 Moss Mill, Hammonton, NJ, 08037

Price \$125,000.00



#### PROPERTY DETAILS

Total Rooms	
Bedrooms	0
Baths Full	0
Baths Half	0
Year Built	
Type	
Block Number	04001
Listing #	582855
Taxes	1647.00

#### COMMENTS

*There's one way to combat against low inventory. Build your own! This half acre lot (.48) is situated on Moss Mill Road and backs up to Egg Harbor Road. It's surrounded by well-maintained homes, including a premier development around the corner. It's less than a minute drive to the Hammonton Lake Park, Downtown Hammonton and the White Horse Pike. Water/Sewer hookup are ...*

#### PROPERTY FEATURES

#### CONTACT

Berger Realty Inc  
3160 Asbury Ave.  
Ocean City, NJ 08226  
Call: (609) 399-0076  
Email to: info@bergerrealty.com  
Web: www.bergerrealty.com

Scan to see Property page.



Berger Realty, Inc.  
3160 Asbury Avenue  
Ocean City, NJ 08226  
1-877-237-4371 / 609-399-0076  
info@bergerrealty.com



758 Moss Mill, Hammonton, NJ, 08037

Price \$125,000.00



#### PROPERTY DETAILS

Total Rooms	
Bedrooms	0
Baths Full	0
Baths Half	0
Year Built	
Type	
Block Number	04001
Listing #	582855
Taxes	1647.00

#### COMMENTS

*There's one way to combat against low inventory. Build your own! This half acre lot (.48) is situated on Moss Mill Road and backs up to Egg Harbor Road. It's surrounded by well-maintained homes, including a premier development around the corner. It's less than a minute drive to the Hammonton Lake Park, Downtown Hammonton and the White Horse Pike. Water/Sewer hookup are ...*

#### PROPERTY FEATURES

#### CONTACT

Berger Realty Inc  
3160 Asbury Ave.  
Ocean City, NJ 08226  
Call: (609) 399-0076  
Email to: info@bergerrealty.com  
Web: www.bergerrealty.com

Scan to see Property page.

