

Berger Realty

Since 1926



Berger Realty, Inc.
3160 Asbury Avenue
Ocean City, NJ 08226
1-877-237-4371 / 609-399-0076
info@bergerrealty.com



301 Mays Landing Rd, Somers Point, NJ, 08244

Price \$2,899,999.00

PROPERTY DETAILS

Total Rooms	0
Bedrooms	0
Baths Full	0
Baths Half	0
Year Built	
Type	
Block Number	1914
Listing #	582833
Taxes	27029.00

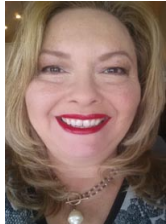
COMMENTS

Welcome to \"The Passport Inn\" (6 MacArthur Blvd) a rare and exceptional opportunity to own a prime piece of real estate in the highly sought after area of Somers Point, NJ. This unique property features an impressive 8698 square feet of space made up of a 22-unit motel and an additional 3-bed 2-bath apartment, perfect for owner's quarters or additional rental/ABNB incom...

PROPERTY FEATURES

OutsideFeatures
Swimming Pool

CONTACT



Ask for Theresa Maina
Berger Realty Inc
3160 Asbury Avenue, Ocean City
Call: 609-703-7725
Email to: tam@bergerrealty.com

Scan to see Property page.



Berger Realty

Since 1926



Berger Realty, Inc.
3160 Asbury Avenue
Ocean City, NJ 08226
1-877-237-4371 / 609-399-0076
info@bergerrealty.com



301 Mays Landing Rd, Somers Point, NJ, 08244

Price \$2,899,999.00

PROPERTY DETAILS

Total Rooms	0
Bedrooms	0
Baths Full	0
Baths Half	0
Year Built	
Type	
Block Number	1914
Listing #	582833
Taxes	27029.00

COMMENTS

Welcome to \"The Passport Inn\" (6 MacArthur Blvd) a rare and exceptional opportunity to own a prime piece of real estate in the highly sought after area of Somers Point, NJ. This unique property features an impressive 8698 square feet of space made up of a 22-unit motel and an additional 3-bed 2-bath apartment, perfect for owner's quarters or additional rental/ABNB incom...

PROPERTY FEATURES

OutsideFeatures
Swimming Pool

CONTACT



Ask for Theresa Maina
Berger Realty Inc
3160 Asbury Avenue, Ocean City
Call: 609-703-7725
Email to: tam@bergerrealty.com

Scan to see Property page.

