

# Berger Realty

Since 1926



Berger Realty, Inc.  
3160 Asbury Avenue  
Ocean City, NJ 08226  
1-877-237-4371 / 609-399-0076  
info@bergerrealty.com



Betsy Scull, Egg Harbor Township, NJ, 08234

Price \$149,900.00

### PROPERTY DETAILS

Total Rooms	0
Bedrooms	0
Baths Full	0
Baths Half	0
Year Built	
Type	
Block Number	4901
Listing #	582434
Taxes	5086.00

### COMMENTS

**\*\*THE OPPORTUNITIES ARE ENDLESS\*\*** It's time to embark with new construction on recently approved buildable land near the Great Egg Harbor River!. With the assurance of recent DEP approval, and approximately 1/2 acre of buildable ground- you can embark on the journey of constructing a custom-built home tailored to your preferences and lifestyle. Sale is contingent on sche...

### PROPERTY FEATURES

### CONTACT



Ask for Evelyn "Evie" Schweibinz  
Berger Realty Inc  
3160 Asbury Avenue, Ocean City  
Call:  
Email to: [ems@bergerrealty.com](mailto:ems@bergerrealty.com)

Scan to see Property page.



# Berger Realty

Since 1926



Berger Realty, Inc.  
3160 Asbury Avenue  
Ocean City, NJ 08226  
1-877-237-4371 / 609-399-0076  
info@bergerrealty.com



Betsy Scull, Egg Harbor Township, NJ, 08234

Price \$149,900.00

### PROPERTY DETAILS

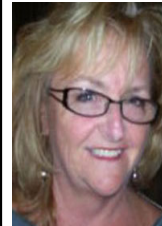
Total Rooms	0
Bedrooms	0
Baths Full	0
Baths Half	0
Year Built	
Type	
Block Number	4901
Listing #	582434
Taxes	5086.00

### COMMENTS

**\*\*THE OPPORTUNITIES ARE ENDLESS\*\*** It's time to embark with new construction on recently approved buildable land near the Great Egg Harbor River!. With the assurance of recent DEP approval, and approximately 1/2 acre of buildable ground- you can embark on the journey of constructing a custom-built home tailored to your preferences and lifestyle. Sale is contingent on sche...

### PROPERTY FEATURES

### CONTACT



Ask for Evelyn "Evie" Schweibinz  
Berger Realty Inc  
3160 Asbury Avenue, Ocean City  
Call:  
Email to: [ems@bergerrealty.com](mailto:ems@bergerrealty.com)

Scan to see Property page.

