

Berger Realty

Since 1926

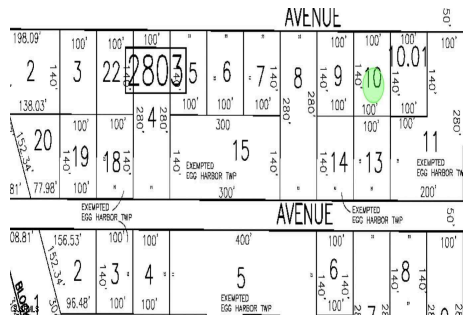


Berger Realty, Inc.
55th & Haven Avenue
Ocean City, NJ 08226
609-399-0040
info@bergerrealty.com



106 Leo, Egg Harbor Township, NJ, 08234

Price \$39,999.00



PROPERTY DETAILS

Total Rooms 0
Bedrooms 0
Baths Full 0
Baths Half 0
Year Built 0
Type
Block Number 2804
Listing # 582258
Taxes 163.00

COMMENTS

SELLER DOES NOT HAVE ANY APPROVALS. BUYER MUST DO THEIR OWN DUE DILIGENCE. Residential lot in understated neighborhood at the end of Leo Avenue. A 1/4 Pineland credit due to be purchased for individual lot sales. For multiple lot sales, the Buyer must do their own due diligence. Utilities are available. **BUYER MUST DO THEIR OWN DUE DILIGENCE....**

PROPERTY FEATURES

CONTACT



Ask for Rodman Pierce
Berger Realty Inc
109 E 55th St., Ocean City
Call: 609-425-8862
Email to: rpp@bergerrealty.com

Scan to see Property page.



Berger Realty

Since 1926

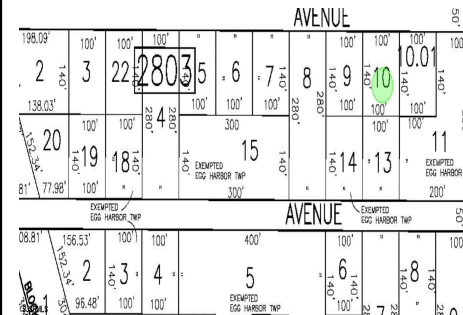


Berger Realty, Inc.
55th & Haven Avenue
Ocean City, NJ 08226
609-399-0040
info@bergerrealty.com



106 Leo, Egg Harbor Township, NJ, 08234

Price \$39,999.00



PROPERTY DETAILS

Total Rooms 0
Bedrooms 0
Baths Full 0
Baths Half 0
Year Built 0
Type
Block Number 2804
Listing # 582258
Taxes 163.00

COMMENTS

SELLER DOES NOT HAVE ANY APPROVALS. BUYER MUST DO THEIR OWN DUE DILIGENCE. Residential lot in understated neighborhood at the end of Leo Avenue. A 1/4 Pineland credit due to be purchased for individual lot sales. For multiple lot sales, the Buyer must do their own due diligence. Utilities are available. **BUYER MUST DO THEIR OWN DUE DILIGENCE....**

PROPERTY FEATURES

CONTACT



Ask for Rodman Pierce
Berger Realty Inc
109 E 55th St., Ocean City
Call: 609-425-8862
Email to: rpp@bergerrealty.com

Scan to see Property page.

