

Berger Realty

Since 1926



Ocean 17
1670 Boardwalk
Ocean City, NJ 08226
609-391-0500

oc17@BergerRealty.com



106 Leo, Egg Harbor Township, NJ, 08234

Price \$39,999.00



PROPERTY DETAILS

Total Rooms	0
Bedrooms	0
Baths Full	0
Baths Half	0
Year Built	
Type	
Block Number	2804
Listing #	582258
Taxes	163.00

COMMENTS

SELLER DOES NOT HAVE ANY APPROVALS. BUYER MUST DO THEIR OWN DUE DILIGENCE. Residential lot in understated neighborhood at the end of Leo Avenue. A 1/4 Pineland credit due to be purchased for individual lot sales. For multiple lot sales, the Buyer must do their own due diligence. Utilities are available. **BUYER MUST DO THEIR OWN DUE DILIGENCE....**

PROPERTY FEATURES

CONTACT



Ask for Dylan Perry
Berger Realty Inc
1670 Boardwalk, Ocean City
Call: 609-675-6737
Email to: dcp@bergerrealty.com

Scan to see Property page.



Berger Realty

Since 1926



Ocean 17
1670 Boardwalk
Ocean City, NJ 08226
609-391-0500

oc17@BergerRealty.com



106 Leo, Egg Harbor Township, NJ, 08234

Price \$39,999.00



PROPERTY DETAILS

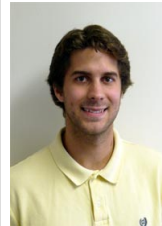
Total Rooms	0
Bedrooms	0
Baths Full	0
Baths Half	0
Year Built	
Type	
Block Number	2804
Listing #	582258
Taxes	163.00

COMMENTS

SELLER DOES NOT HAVE ANY APPROVALS. BUYER MUST DO THEIR OWN DUE DILIGENCE. Residential lot in understated neighborhood at the end of Leo Avenue. A 1/4 Pineland credit due to be purchased for individual lot sales. For multiple lot sales, the Buyer must do their own due diligence. Utilities are available. **BUYER MUST DO THEIR OWN DUE DILIGENCE....**

PROPERTY FEATURES

CONTACT



Ask for Dylan Perry
Berger Realty Inc
1670 Boardwalk, Ocean City
Call: 609-675-6737
Email to: dcp@bergerrealty.com

Scan to see Property page.

