

Berger Realty

Since 1926



Berger Realty, Inc.
3160 Asbury Avenue
Ocean City, NJ 08226
1-877-237-4371 / 609-399-0076
info@bergerrealty.com



4011 Ridge, Egg Harbor Township, NJ, 08234

Price \$65,000.00

PROPERTY DETAILS

| | |
|--------------|---------|
| Total Rooms | 0 |
| Bedrooms | 0 |
| Baths Full | 0 |
| Baths Half | 0 |
| Year Built | |
| Type | |
| Block Number | 2502 |
| Listing # | 581984 |
| Taxes | 2084.00 |



Buildable 3.94 acre lot
Pineland credit paid and
engineering plans complete !

COMMENTS

3.9 Acres of beautiful wooded oasis centrally located off of West Jersey Ave in Egg Harbor Twp. Pinelands approved and Pinelands credit PAID! Septic design complete. Gas at street. Property is ready to build your dream home. Curb and sidewalk have been waived....

PROPERTY FEATURES

CONTACT



Ask for Sara Varani
Berger Realty Inc
3160 Asbury Avenue, Ocean City
Call:
Email to: sev@bergerrealty.com

Scan to see Property page.



Berger Realty

Since 1926



Berger Realty, Inc.
3160 Asbury Avenue
Ocean City, NJ 08226
1-877-237-4371 / 609-399-0076
info@bergerrealty.com



4011 Ridge, Egg Harbor Township, NJ, 08234

Price \$65,000.00

PROPERTY DETAILS

| | |
|--------------|---------|
| Total Rooms | 0 |
| Bedrooms | 0 |
| Baths Full | 0 |
| Baths Half | 0 |
| Year Built | |
| Type | |
| Block Number | 2502 |
| Listing # | 581984 |
| Taxes | 2084.00 |



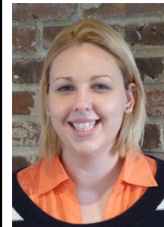
Buildable 3.94 acre lot
Pineland credit paid and
engineering plans complete !

COMMENTS

3.9 Acres of beautiful wooded oasis centrally located off of West Jersey Ave in Egg Harbor Twp. Pinelands approved and Pinelands credit PAID! Septic design complete. Gas at street. Property is ready to build your dream home. Curb and sidewalk have been waived....

PROPERTY FEATURES

CONTACT



Ask for Sara Varani
Berger Realty Inc
3160 Asbury Avenue, Ocean City
Call:
Email to: sev@bergerrealty.com

Scan to see Property page.

