



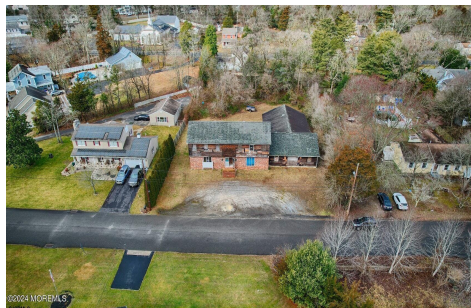
Berger Realty, Inc.
3160 Asbury Avenue
Ocean City, NJ 08226
1-877-237-4371 / 609-399-0076
info@bergerrealty.com



107 Old Goshen Rd, Cape May Court House, NJ, 08210

Price \$499,900.00

PROPERTY DETAILS



Total Rooms	
Bedrooms	0
Baths Full	0
Baths Half	0
Year Built	
Type	
Block Number	246
Listing #	581760
Taxes	6316.00

COMMENTS

Exceptional Healthcare Facility Opportunity in Dennis Twp, NJ South Seaville Manor Auxiliary, Inc., a 501c (3) Non-Profit Organization, offers an exclusive opportunity with this Residential Health Care Facility (RHCF) and Hospice located in the peaceful Cape May County. This property, designed to serve the terminally ill and disabled, is ideal for investors or organization...

PROPERTY FEATURES

CONTACT



Ask for Michael Devlin
Berger Realty Inc
3160 Asbury Avenue, Ocean City
Call: 609-306-3730
Email to: msd@bergerrealty.com

Scan to see Property page.



Berger Realty, Inc.
3160 Asbury Avenue
Ocean City, NJ 08226
1-877-237-4371 / 609-399-0076
info@bergerrealty.com



107 Old Goshen Rd, Cape May Court House, NJ, 08210

Price \$499,900.00

PROPERTY DETAILS



Total Rooms	
Bedrooms	0
Baths Full	0
Baths Half	0
Year Built	
Type	
Block Number	246
Listing #	581760
Taxes	6316.00

COMMENTS

Exceptional Healthcare Facility Opportunity in Dennis Twp, NJ South Seaville Manor Auxiliary, Inc., a 501c (3) Non-Profit Organization, offers an exclusive opportunity with this Residential Health Care Facility (RHCF) and Hospice located in the peaceful Cape May County. This property, designed to serve the terminally ill and disabled, is ideal for investors or organization...

PROPERTY FEATURES

CONTACT



Ask for Michael Devlin
Berger Realty Inc
3160 Asbury Avenue, Ocean City
Call: 609-306-3730
Email to: msd@bergerrealty.com

Scan to see Property page.

