



Berger Realty, Inc.  
3160 Asbury Avenue  
Ocean City, NJ 08226  
1-877-237-4371 / 609-399-0076  
info@bergerrealty.com



L15 L15 02 Ash Avenue, Galloway Township, NJ, 08205

Price \$100,000.00

#### PROPERTY DETAILS



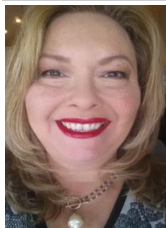
Total Rooms	
Bedrooms	0
Baths Full	0
Baths Half	0
Year Built	
Type	
Block Number	866.02
Listing #	581667
Taxes	1413.00

#### COMMENTS

*Discover the ideal canvas for your dream home on this fabulous buildable lot! Located in Galloway Township, this vacant lot offers the perfect blend of convenience and serenity. With easy access to major highways, schools, shopping centers, parks, and more, the spacious and versatile 1.21 acre lot awaits your architectural masterpiece. More so, this lot not only provides...*

#### PROPERTY FEATURES

#### CONTACT



Ask for Theresa Maina  
Berger Realty Inc  
3160 Asbury Avenue, Ocean City  
Call: 609-703-7725  
Email to: tam@bergerrealty.com

Scan to see Property page.



Berger Realty, Inc.  
3160 Asbury Avenue  
Ocean City, NJ 08226  
1-877-237-4371 / 609-399-0076  
info@bergerrealty.com



L15 L15 02 Ash Avenue, Galloway Township, NJ, 08205

Price \$100,000.00

#### PROPERTY DETAILS



Total Rooms	
Bedrooms	0
Baths Full	0
Baths Half	0
Year Built	
Type	
Block Number	866.02
Listing #	581667
Taxes	1413.00

#### COMMENTS

*Discover the ideal canvas for your dream home on this fabulous buildable lot! Located in Galloway Township, this vacant lot offers the perfect blend of convenience and serenity. With easy access to major highways, schools, shopping centers, parks, and more, the spacious and versatile 1.21 acre lot awaits your architectural masterpiece. More so, this lot not only provides...*

#### PROPERTY FEATURES

#### CONTACT



Ask for Theresa Maina  
Berger Realty Inc  
3160 Asbury Avenue, Ocean City  
Call: 609-703-7725  
Email to: tam@bergerrealty.com

Scan to see Property page.

