



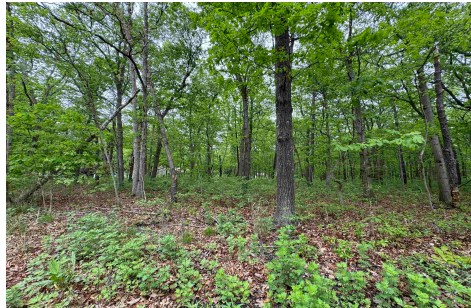
Berger Realty, Inc.
3160 Asbury Avenue
Ocean City, NJ 08226
1-877-237-4371 / 609-399-0076
info@bergerrealty.com



L15 L15 02 Ash Avenue, Galloway Township, NJ, 08205

Price \$100,000.00

PROPERTY DETAILS



Total Rooms	
Bedrooms	0
Baths Full	0
Baths Half	0
Year Built	
Type	
Block Number	866.02
Listing #	581667
Taxes	1413.00

COMMENTS

Discover the ideal canvas for your dream home on this fabulous buildable lot! Located in Galloway Township, this vacant lot offers the perfect blend of convenience and serenity. With easy access to major highways, schools, shopping centers, parks, and more, the spacious and versatile 1.21 acre lot awaits your architectural masterpiece. More so, this lot not only provides...

PROPERTY FEATURES

CONTACT



Ask for Joyce McMahon
Berger Realty Inc
3160 Asbury Avenue, Ocean City
Call:
Email to: jmm@bergerrealty.com

Scan to see Property page.



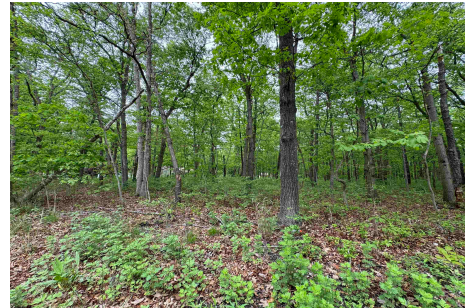
Berger Realty, Inc.
3160 Asbury Avenue
Ocean City, NJ 08226
1-877-237-4371 / 609-399-0076
info@bergerrealty.com



L15 L15 02 Ash Avenue, Galloway Township, NJ, 08205

Price \$100,000.00

PROPERTY DETAILS



Total Rooms	
Bedrooms	0
Baths Full	0
Baths Half	0
Year Built	
Type	
Block Number	866.02
Listing #	581667
Taxes	1413.00

COMMENTS

Discover the ideal canvas for your dream home on this fabulous buildable lot! Located in Galloway Township, this vacant lot offers the perfect blend of convenience and serenity. With easy access to major highways, schools, shopping centers, parks, and more, the spacious and versatile 1.21 acre lot awaits your architectural masterpiece. More so, this lot not only provides...

PROPERTY FEATURES

CONTACT



Ask for Joyce McMahon
Berger Realty Inc
3160 Asbury Avenue, Ocean City
Call:
Email to: jmm@bergerrealty.com

Scan to see Property page.

