

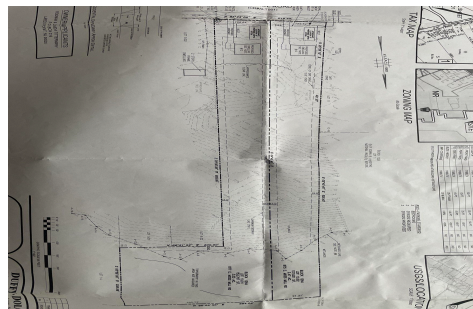


Berger Realty, Inc.
3160 Asbury Avenue
Ocean City, NJ 08226
1-877-237-4371 / 609-399-0076
info@bergerrealty.com



877 Moss Mill, Galloway Township, NJ, 08205

Price \$110,000.00



PROPERTY DETAILS

Total Rooms	
Bedrooms	0
Baths Full	0
Baths Half	0
Year Built	
Type	
Block Number	1264
Listing #	581188
Taxes	1988.00

COMMENTS

Here's your opportunity to build your dream home in the wonderful Leeds Point area of Galloway township. Just minutes to Smithville Village and backs up the the wildlife refuge. This 3.53 acre lot is cleared in the front and then wooded in the middle and back, with wetlands on the very back end of the lot. But there is plenty of room to build your home. Natural ga...

PROPERTY FEATURES

CONTACT



Ask for Theresa Maina
Berger Realty Inc
3160 Asbury Avenue, Ocean City
Call: 609-703-7725
Email to: tam@bergerrealty.com

Scan to see Property page.

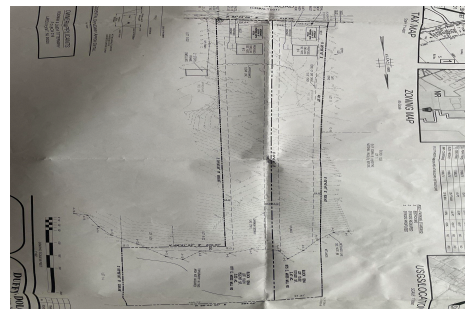


Berger Realty, Inc.
3160 Asbury Avenue
Ocean City, NJ 08226
1-877-237-4371 / 609-399-0076
info@bergerrealty.com



877 Moss Mill, Galloway Township, NJ, 08205

Price \$110,000.00



PROPERTY DETAILS

Total Rooms	
Bedrooms	0
Baths Full	0
Baths Half	0
Year Built	
Type	
Block Number	1264
Listing #	581188
Taxes	1988.00

COMMENTS

Here's your opportunity to build your dream home in the wonderful Leeds Point area of Galloway township. Just minutes to Smithville Village and backs up the the wildlife refuge. This 3.53 acre lot is cleared in the front and then wooded in the middle and back, with wetlands on the very back end of the lot. But there is plenty of room to build your home. Natural ga...

PROPERTY FEATURES

CONTACT



Ask for Theresa Maina
Berger Realty Inc
3160 Asbury Avenue, Ocean City
Call: 609-703-7725
Email to: tam@bergerrealty.com

Scan to see Property page.

