

# Berger Realty

Since 1926

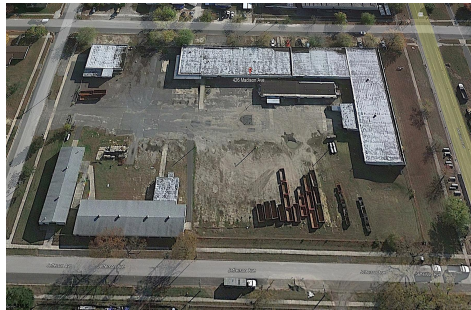


Berger Realty, Inc.  
3160 Asbury Avenue  
Ocean City, NJ 08226  
1-877-237-4371 / 609-399-0076  
info@bergerrealty.com



426 Madison Avenue, Woodbine Borough, NJ, 08270

Price \$3,299,000.00



### PROPERTY DETAILS

Total Rooms	
Bedrooms	0
Baths Full	0
Baths Half	0
Year Built	
Type	
Block Number	68
Listing #	580926
Taxes	30874.00

### COMMENTS

*Woodbine Industrial Location Multiple Addresses, Woodbine, NJ Attention investors and business owners! Discover an incredible opportunity at the Woodbine Industrial Park. This expansive property offers a total of 46,263 square feet across four buildings, providing ample space for a variety of businesses. Located in the Industrial District, with the convenience of being clo...*

### PROPERTY FEATURES

Exterior Block	OutsideFeatures See Remarks	ParkingGarage Other (See Remarks)	InteriorFeatures Other (See Remarks) Three Phase Electric
Basement Slab	Water Public	Sewer Septic	

### CONTACT



Ask for Lauren Greiner  
Berger Realty Inc  
3160 Asbury Avenue, Ocean City  
Call: 609-602-5960  
Email to: lmg@bergerrealty.com

Scan to see Property page.



# Berger Realty

Since 1926

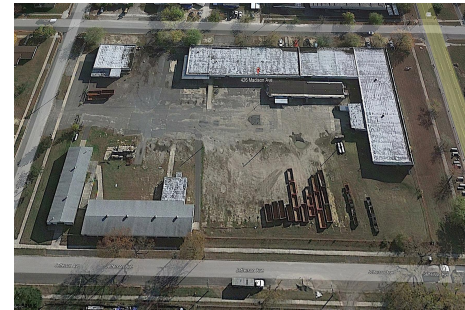


Berger Realty, Inc.  
3160 Asbury Avenue  
Ocean City, NJ 08226  
1-877-237-4371 / 609-399-0076  
info@bergerrealty.com



426 Madison Avenue, Woodbine Borough, NJ, 08270

Price \$3,299,000.00



### PROPERTY DETAILS

Total Rooms	
Bedrooms	0
Baths Full	0
Baths Half	0
Year Built	
Type	
Block Number	68
Listing #	580926
Taxes	30874.00

### COMMENTS

*Woodbine Industrial Location Multiple Addresses, Woodbine, NJ Attention investors and business owners! Discover an incredible opportunity at the Woodbine Industrial Park. This expansive property offers a total of 46,263 square feet across four buildings, providing ample space for a variety of businesses. Located in the Industrial District, with the convenience of being clo...*

### PROPERTY FEATURES

Exterior Block	OutsideFeatures See Remarks	ParkingGarage Other (See Remarks)	InteriorFeatures Other (See Remarks) Three Phase Electric
Basement Slab	Water Public	Sewer Septic	

### CONTACT



Ask for Lauren Greiner  
Berger Realty Inc  
3160 Asbury Avenue, Ocean City  
Call: 609-602-5960  
Email to: lmg@bergerrealty.com

Scan to see Property page.

