

Berger Realty

Since 1926



Berger Realty, Inc.
3160 Asbury Avenue
Ocean City, NJ 08226
1-877-237-4371 / 609-399-0076
info@bergerrealty.com



390 Steelmanville Road, Egg Harbor Township, NJ, 08234

Price \$35,000.00

PROPERTY DETAILS

| | |
|--------------|---------|
| Total Rooms | |
| Bedrooms | 0 |
| Baths Full | 0 |
| Baths Half | 0 |
| Year Built | |
| Type | |
| Block Number | 6901 |
| Listing # | 580710 |
| Taxes | 2124.00 |

COMMENTS

Serene wooded lot, only 15 minutes from Ocean City, endless possibilities. Survey and soil report in associated docs. Buyer responsible for all due diligence and approvals including utilities, setbacks, wetlands, CAFRA, etc....

PROPERTY FEATURES

CONTACT



Ask for Lauren Greiner
Berger Realty Inc
3160 Asbury Avenue, Ocean City
Call: 609-602-5960
Email to: lmg@bergerrealty.com

Scan to see Property page.



Berger Realty

Since 1926



Berger Realty, Inc.
3160 Asbury Avenue
Ocean City, NJ 08226
1-877-237-4371 / 609-399-0076
info@bergerrealty.com



390 Steelmanville Road, Egg Harbor Township, NJ, 08234

Price \$35,000.00

PROPERTY DETAILS

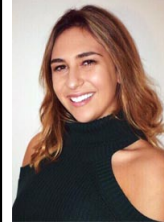
| | |
|--------------|---------|
| Total Rooms | |
| Bedrooms | 0 |
| Baths Full | 0 |
| Baths Half | 0 |
| Year Built | |
| Type | |
| Block Number | 6901 |
| Listing # | 580710 |
| Taxes | 2124.00 |

COMMENTS

Serene wooded lot, only 15 minutes from Ocean City, endless possibilities. Survey and soil report in associated docs. Buyer responsible for all due diligence and approvals including utilities, setbacks, wetlands, CAFRA, etc....

PROPERTY FEATURES

CONTACT



Ask for Lauren Greiner
Berger Realty Inc
3160 Asbury Avenue, Ocean City
Call: 609-602-5960
Email to: lmg@bergerrealty.com

Scan to see Property page.

