

Berger Realty

Since 1926



Berger Realty, Inc.
3160 Asbury Avenue
Ocean City, NJ 08226
1-877-237-4371 / 609-399-0076
info@bergerrealty.com



4 SPATTERDOCK LANE, Linwood, NJ, 08221

Price \$179,900.00

PROPERTY DETAILS

| | |
|--------------|---------|
| Total Rooms | |
| Bedrooms | 0 |
| Baths Full | 0 |
| Baths Half | 0 |
| Year Built | |
| Type | |
| Block Number | 1 |
| Listing # | 580572 |
| Taxes | 3638.00 |

COMMENTS

GREAT BUILDABLE LINWOOD HOMESITE WITH MEADOW AND WATERFRONT PRIVATE CUL-DE-SAC LOCATION ON PATCONG CREEK WITH APPROVALS. INCLUDES SURVEY, PLOT PLAN AND CAFRA PERMIT....

PROPERTY FEATURES

CONTACT



Ask for Lauren Greiner
Berger Realty Inc
3160 Asbury Avenue, Ocean City
Call: 609-602-5960
Email to: lmg@bergerrealty.com

Scan to see Property page.



Berger Realty

Since 1926



Berger Realty, Inc.
3160 Asbury Avenue
Ocean City, NJ 08226
1-877-237-4371 / 609-399-0076
info@bergerrealty.com



4 SPATTERDOCK LANE, Linwood, NJ, 08221

Price \$179,900.00

PROPERTY DETAILS

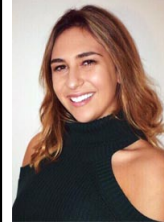
| | |
|--------------|---------|
| Total Rooms | |
| Bedrooms | 0 |
| Baths Full | 0 |
| Baths Half | 0 |
| Year Built | |
| Type | |
| Block Number | 1 |
| Listing # | 580572 |
| Taxes | 3638.00 |

COMMENTS

GREAT BUILDABLE LINWOOD HOMESITE WITH MEADOW AND WATERFRONT PRIVATE CUL-DE-SAC LOCATION ON PATCONG CREEK WITH APPROVALS. INCLUDES SURVEY, PLOT PLAN AND CAFRA PERMIT....

PROPERTY FEATURES

CONTACT



Ask for Lauren Greiner
Berger Realty Inc
3160 Asbury Avenue, Ocean City
Call: 609-602-5960
Email to: lmg@bergerrealty.com

Scan to see Property page.

