

Berger Realty

Since 1928



Berger Realty, Inc.
3160 Asbury Avenue
Ocean City, NJ 08226
1-877-237-4371 / 609-399-0076
info@bergerrealty.com



6047 Harding Hwy, Mays Landing, NJ, 08330

Price \$499,900.00

PROPERTY DETAILS

Total Rooms	
Bedrooms	0
Baths Full	0
Baths Half	0
Year Built	
Type	
Block Number	736
Listing #	580103
Taxes	2774.00

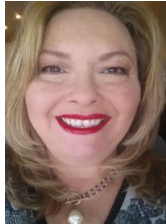
COMMENTS

Prime Commercial Property with Highway Visibility -This is a Rare Opportunity! Explore endless possibilities with this exceptional commercial property strategically located on a prominent corner with highway visibility. This unique offering includes three properties being sold as one, presenting an unparalleled opportunity for investors and business enthusiasts alike. Add...

PROPERTY FEATURES

Heating	Cooling	HotWater	Water
Baseboard	Ceiling Fan(s)	Electric	Public
Electric	Window Units		
Forced Air			
Oil			
Radiator			
Sewer			
Public Sewer			

CONTACT



Ask for Theresa Maina
Berger Realty Inc
3160 Asbury Avenue, Ocean City
Call: 609-703-7725
Email to: tam@bergerrealty.com

Scan to see Property page.



Berger Realty

Since 1928



Berger Realty, Inc.
3160 Asbury Avenue
Ocean City, NJ 08226
1-877-237-4371 / 609-399-0076
info@bergerrealty.com



6047 Harding Hwy, Mays Landing, NJ, 08330

Price \$499,900.00

PROPERTY DETAILS

Total Rooms	
Bedrooms	0
Baths Full	0
Baths Half	0
Year Built	
Type	
Block Number	736
Listing #	580103
Taxes	2774.00

COMMENTS

Prime Commercial Property with Highway Visibility -This is a Rare Opportunity! Explore endless possibilities with this exceptional commercial property strategically located on a prominent corner with highway visibility. This unique offering includes three properties being sold as one, presenting an unparalleled opportunity for investors and business enthusiasts alike. Add...

PROPERTY FEATURES

Heating	Cooling	HotWater	Water
Baseboard	Ceiling Fan(s)	Electric	Public
Electric	Window Units		
Forced Air			
Oil			
Radiator			
Sewer			
Public Sewer			

CONTACT



Ask for Theresa Maina
Berger Realty Inc
3160 Asbury Avenue, Ocean City
Call: 609-703-7725
Email to: tam@bergerrealty.com

Scan to see Property page.

