

# Berger Realty

Since 1926



Berger Realty, Inc.  
3160 Asbury Avenue  
Ocean City, NJ 08226  
1-877-237-4371 / 609-399-0076  
info@bergerrealty.com



3302 Larkspur Ct # 46, 3302, Mays Landing, NJ, 08330

Price \$159,899.00

### PROPERTY DETAILS



Total Rooms	4
Bedrooms	2
Baths Full	1
Baths Half	0
Year Built	
Type	Condo
Block Number	1135.19
Listing #	580088
Taxes	1561.00

### COMMENTS

**\*\*\*\*\*BEST LOCATION IN THE WOODLANDS\*\*\*\*\* FIRST FLOOR W/ NICE FLOORPLAN-SHOW N GO EASY TO SHOW! CLOSE TO EVERYTHING INC TRANSPORATION, THE MALL, SHOPPING , DINING AND MAJOR HIGHWAYS! THIS 2 BEDROOM 1 BATH CONDO IS SUPER AFFORDABLE W/. LOW TAXES BRAND NEW WOOD FLOORING THROUGH OUT FRESHLY PAINTED AND EZ TO SHOW....**

### PROPERTY FEATURES

ParkingGarage	Heating	Cooling	HotWater
None	Electric	Central	Electric
Water	Sewer		
Public Water	Public Sewer		

### CONTACT



Ask for Sara Varani  
Berger Realty Inc  
3160 Asbury Avenue, Ocean City  
Call:  
Email to: sev@bergerrealty.com

Scan to see Property page.



# Berger Realty

Since 1926



Berger Realty, Inc.  
3160 Asbury Avenue  
Ocean City, NJ 08226  
1-877-237-4371 / 609-399-0076  
info@bergerrealty.com



3302 Larkspur Ct # 46, 3302, Mays Landing, NJ, 08330

Price \$159,899.00

### PROPERTY DETAILS



Total Rooms	4
Bedrooms	2
Baths Full	1
Baths Half	0
Year Built	
Type	Condo
Block Number	1135.19
Listing #	580088
Taxes	1561.00

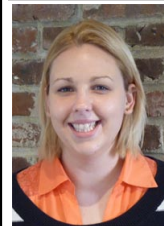
### COMMENTS

**\*\*\*\*\*BEST LOCATION IN THE WOODLANDS\*\*\*\*\* FIRST FLOOR W/ NICE FLOORPLAN-SHOW N GO EASY TO SHOW! CLOSE TO EVERYTHING INC TRANSPORATION, THE MALL, SHOPPING , DINING AND MAJOR HIGHWAYS! THIS 2 BEDROOM 1 BATH CONDO IS SUPER AFFORDABLE W/. LOW TAXES BRAND NEW WOOD FLOORING THROUGH OUT FRESHLY PAINTED AND EZ TO SHOW....**

### PROPERTY FEATURES

ParkingGarage	Heating	Cooling	HotWater
None	Electric	Central	Electric
Water	Sewer		
Public Water	Public Sewer		

### CONTACT



Ask for Sara Varani  
Berger Realty Inc  
3160 Asbury Avenue, Ocean City  
Call:  
Email to: sev@bergerrealty.com

Scan to see Property page.

