

Berger Realty

Since 1926



Berger Realty, Inc.
3160 Asbury Avenue
Ocean City, NJ 08226
1-877-237-4371 / 609-399-0076
info@bergerrealty.com



7009 BLACK HORSE PIKE, Egg Harbor Township, NJ, 08232

Price \$124,900.00

PROPERTY DETAILS



Total Rooms	
Bedrooms	0
Baths Full	0
Baths Half	0
Year Built	
Type	
Block Number	4209
Listing #	579618
Taxes	2921.00

COMMENTS

LARGE HALF ACRE RESIDENTIAL OR COMMERCIAL SITE WITH 200 FT OF HIGHWAY FRONTAGE FROM STREET TO STREET (BETWEEN TOULON AND GENOA AVENUES) CAN BE SUBDIVIDED INTO 3-4 BUILDING LOTS OR WOULD BE GREAT COMMERCIAL LOCATION WITH 200 FT OF HIGHWAY FRONTAGE. ALSO HAD PRIOR NON PROFIT APPROVAL....

PROPERTY FEATURES

CONTACT



Ask for Sara Varani
Berger Realty Inc
3160 Asbury Avenue, Ocean City
Call:
Email to: sev@bergerrealty.com

Scan to see Property page.



Berger Realty

Since 1926



Berger Realty, Inc.
3160 Asbury Avenue
Ocean City, NJ 08226
1-877-237-4371 / 609-399-0076
info@bergerrealty.com



7009 BLACK HORSE PIKE, Egg Harbor Township, NJ, 08232

Price \$124,900.00

PROPERTY DETAILS



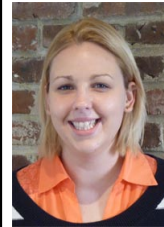
Total Rooms	
Bedrooms	0
Baths Full	0
Baths Half	0
Year Built	
Type	
Block Number	4209
Listing #	579618
Taxes	2921.00

COMMENTS

LARGE HALF ACRE RESIDENTIAL OR COMMERCIAL SITE WITH 200 FT OF HIGHWAY FRONTAGE FROM STREET TO STREET (BETWEEN TOULON AND GENOA AVENUES) CAN BE SUBDIVIDED INTO 3-4 BUILDING LOTS OR WOULD BE GREAT COMMERCIAL LOCATION WITH 200 FT OF HIGHWAY FRONTAGE. ALSO HAD PRIOR NON PROFIT APPROVAL....

PROPERTY FEATURES

CONTACT



Ask for Sara Varani
Berger Realty Inc
3160 Asbury Avenue, Ocean City
Call:
Email to: sev@bergerrealty.com

Scan to see Property page.

