



Berger Realty, Inc.
3160 Asbury Avenue
Ocean City, NJ 08226
1-877-237-4371 / 609-399-0076
info@bergerrealty.com



6508 Black Horse, Egg Harbor Township, NJ, 08234

Price \$450,000.00

PROPERTY DETAILS

Total Rooms	
Bedrooms	0
Baths Full	0
Baths Half	0
Year Built	
Type	
Block Number	1305
Listing #	579385
Taxes	9431.00

COMMENTS

****ATTENTION DEVELOPERS!** PRIME COMMERCIAL LAND IN THE HEART OF IT ALL!! 3.54 prime acres on the high-traffic Black Horse Pike with 247 feet of frontage. Incredible opportunity. High traffic location and perfect for commercial or medical office use. CALL NOW FOR MORE INFORMATION!! You can build 35,000 sqft, seller was originally going to build four 6,000 sq ft buildings and...**

PROPERTY FEATURES

CONTACT



Ask for Margarita Kobilianets
Berger Realty Inc
3160 Asbury Avenue, Ocean City
Call: 609-674-3417
Email to: mak@bergerrealty.com

Scan to see Property page.



Berger Realty, Inc.
3160 Asbury Avenue
Ocean City, NJ 08226
1-877-237-4371 / 609-399-0076
info@bergerrealty.com



6508 Black Horse, Egg Harbor Township, NJ, 08234

Price \$450,000.00

PROPERTY DETAILS

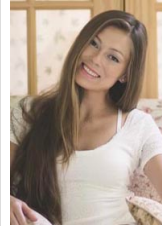
Total Rooms	
Bedrooms	0
Baths Full	0
Baths Half	0
Year Built	
Type	
Block Number	1305
Listing #	579385
Taxes	9431.00

COMMENTS

****ATTENTION DEVELOPERS!** PRIME COMMERCIAL LAND IN THE HEART OF IT ALL!! 3.54 prime acres on the high-traffic Black Horse Pike with 247 feet of frontage. Incredible opportunity. High traffic location and perfect for commercial or medical office use. CALL NOW FOR MORE INFORMATION!! You can build 35,000 sqft, seller was originally going to build four 6,000 sq ft buildings and...**

PROPERTY FEATURES

CONTACT



Ask for Margarita Kobilianets
Berger Realty Inc
3160 Asbury Avenue, Ocean City
Call: 609-674-3417
Email to: mak@bergerrealty.com

Scan to see Property page.

