



Berger Realty, Inc.  
3160 Asbury Avenue  
Ocean City, NJ 08226  
1-877-237-4371 / 609-399-0076  
info@bergerrealty.com



119 Anna St, Cape May Court House, NJ, 08210

Price \$22,500.00

#### PROPERTY DETAILS

Total Rooms	0
Bedrooms	0
Baths Full	0
Baths Half	0
Year Built	
Type	
Block Number	16
Listing #	578740
Taxes	244.00

#### COMMENTS

*Buildable lot being sold with in progress Letter of Interpretation from Dept of Environmental Protection allowing development on existing wetlands. Buyer is advised to due their own due diligence and Buyer will be responsible for U&O. Being sold as a package with 121 E Anna. Contact Listing Agent with questions, interest, etc....*

#### PROPERTY FEATURES

#### CONTACT



Ask for Margarita Kobilianets  
Berger Realty Inc  
3160 Asbury Avenue, Ocean City  
Call: 609-674-3417  
Email to: mak@bergerrealty.com

Scan to see Property page.



Berger Realty, Inc.  
3160 Asbury Avenue  
Ocean City, NJ 08226  
1-877-237-4371 / 609-399-0076  
info@bergerrealty.com



119 Anna St, Cape May Court House, NJ, 08210

Price \$22,500.00

#### PROPERTY DETAILS

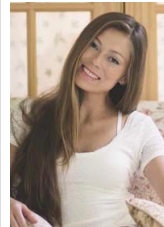
Total Rooms	0
Bedrooms	0
Baths Full	0
Baths Half	0
Year Built	
Type	
Block Number	16
Listing #	578740
Taxes	244.00

#### COMMENTS

*Buildable lot being sold with in progress Letter of Interpretation from Dept of Environmental Protection allowing development on existing wetlands. Buyer is advised to due their own due diligence and Buyer will be responsible for U&O. Being sold as a package with 121 E Anna. Contact Listing Agent with questions, interest, etc....*

#### PROPERTY FEATURES

#### CONTACT



Ask for Margarita Kobilianets  
Berger Realty Inc  
3160 Asbury Avenue, Ocean City  
Call: 609-674-3417  
Email to: mak@bergerrealty.com

Scan to see Property page.

