

Berger Realty

Since 1926



Berger Realty, Inc.
3160 Asbury Avenue
Ocean City, NJ 08226
1-877-237-4371 / 609-399-0076
info@bergerrealty.com



119 Anna St, Cape May Court House, NJ, 08210

Price \$25,000.00

PROPERTY DETAILS

Total Rooms	0
Bedrooms	0
Baths Full	0
Baths Half	0
Year Built	
Type	
Block Number	16
Listing #	578740
Taxes	244.00

COMMENTS

Buildable lot being sold with Letter of Interpretation from Dept of Environmental Protection allowing development on existing wetlands. Buyer is advised to due their own due diligence and Buyer will be responsible for U&O. Being sold as a package with 121 E Anna. Contact Listing Agent with questions, interest, etc....

PROPERTY FEATURES

CONTACT



Ask for Lauren Greiner
Berger Realty Inc
3160 Asbury Avenue, Ocean City
Call: 609-602-5960
Email to: lmg@bergerrealty.com

Scan to see Property page.



Berger Realty

Since 1926



Berger Realty, Inc.
3160 Asbury Avenue
Ocean City, NJ 08226
1-877-237-4371 / 609-399-0076
info@bergerrealty.com



119 Anna St, Cape May Court House, NJ, 08210

Price \$25,000.00

PROPERTY DETAILS

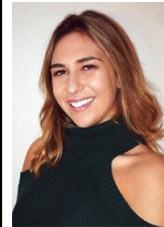
Total Rooms	0
Bedrooms	0
Baths Full	0
Baths Half	0
Year Built	
Type	
Block Number	16
Listing #	578740
Taxes	244.00

COMMENTS

Buildable lot being sold with Letter of Interpretation from Dept of Environmental Protection allowing development on existing wetlands. Buyer is advised to due their own due diligence and Buyer will be responsible for U&O. Being sold as a package with 121 E Anna. Contact Listing Agent with questions, interest, etc....

PROPERTY FEATURES

CONTACT



Ask for Lauren Greiner
Berger Realty Inc
3160 Asbury Avenue, Ocean City
Call: 609-602-5960
Email to: lmg@bergerrealty.com

Scan to see Property page.

