

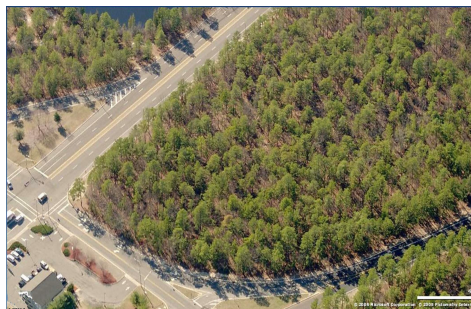


Berger Realty, Inc.
3160 Asbury Avenue
Ocean City, NJ 08226
1-877-237-4371 / 609-399-0076
info@bergerrealty.com



0 Black Horse Pike, Hammonton, NJ, 08037

Price \$489,900.00



PROPERTY DETAILS

Total Rooms	
Bedrooms	0
Baths Full	0
Baths Half	0
Year Built	
Type	
Block Number	6
Listing #	578428
Taxes	982.00

COMMENTS

18.25 Acres with New Zoning. Very Favorable for Development Now! Fronts Three Highways! 1,265 Frontage on well traveled Black Horse Pike (Rt 322), 1,000 Frontage on Mays Landing Road (Spur of Rt 73), and 425 frontage on 8th Street. New Zoning passed circa 2020 changed the zoning to RDC (Rural Development Commercial District) which is very favorable for commercial developme...

PROPERTY FEATURES

CONTACT



Ask for Matthew Bader
Berger Realty Inc
3160 Asbury Avenue, Ocean City
Call: 609-992-4380
Email to: mhb@bergerrealty.com
http://www.BADERCOLLINS.com

Scan to see Property page.



Berger Realty, Inc.
3160 Asbury Avenue
Ocean City, NJ 08226
1-877-237-4371 / 609-399-0076
info@bergerrealty.com



0 Black Horse Pike, Hammonton, NJ, 08037

Price \$489,900.00



PROPERTY DETAILS

Total Rooms	
Bedrooms	0
Baths Full	0
Baths Half	0
Year Built	
Type	
Block Number	6
Listing #	578428
Taxes	982.00

COMMENTS

18.25 Acres with New Zoning. Very Favorable for Development Now! Fronts Three Highways! 1,265 Frontage on well traveled Black Horse Pike (Rt 322), 1,000 Frontage on Mays Landing Road (Spur of Rt 73), and 425 frontage on 8th Street. New Zoning passed circa 2020 changed the zoning to RDC (Rural Development Commercial District) which is very favorable for commercial developme...

PROPERTY FEATURES

CONTACT



Ask for Matthew Bader
Berger Realty Inc
3160 Asbury Avenue, Ocean City
Call: 609-992-4380
Email to: mhb@bergerrealty.com
http://www.BADERCOLLINS.com

Scan to see Property page.

