

# Berger Realty

Since 1926



Berger Realty, Inc.  
3160 Asbury Avenue  
Ocean City, NJ 08226  
1-877-237-4371 / 609-399-0076  
info@bergerrealty.com



Route 50 (County Blvd), Mays Landing, NJ, 08330

Price \$59,000.00

### PROPERTY DETAILS



Total Rooms	
Bedrooms	0
Baths Full	0
Baths Half	0
Year Built	
Type	
Block Number	845
Listing #	578328
Taxes	1775.00

### COMMENTS

Lot contains 5.66 acres with 400\ of frontage in RD-5 zone. Building can be set 120\ from road based on approvals. Great are to spread out and buil the home of your dreams....

### PROPERTY FEATURES

### CONTACT



Ask for Sara Varani  
Berger Realty Inc  
3160 Asbury Avenue, Ocean City  
Call:  
Email to: sev@bergerrealty.com

Scan to see Property page.



# Berger Realty

Since 1926



Berger Realty, Inc.  
3160 Asbury Avenue  
Ocean City, NJ 08226  
1-877-237-4371 / 609-399-0076  
info@bergerrealty.com



Route 50 (County Blvd), Mays Landing, NJ, 08330

Price \$59,000.00

### PROPERTY DETAILS



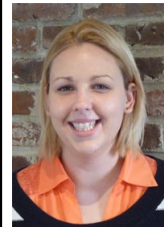
Total Rooms	
Bedrooms	0
Baths Full	0
Baths Half	0
Year Built	
Type	
Block Number	845
Listing #	578328
Taxes	1775.00

### COMMENTS

Lot contains 5.66 acres with 400\ of frontage in RD-5 zone. Building can be set 120\ from road based on approvals. Great are to spread out and buil the home of your dreams....

### PROPERTY FEATURES

### CONTACT



Ask for Sara Varani  
Berger Realty Inc  
3160 Asbury Avenue, Ocean City  
Call:  
Email to: sev@bergerrealty.com

Scan to see Property page.

