

Berger Realty

Since 1926



Berger Realty, Inc.
3160 Asbury Avenue
Ocean City, NJ 08226
1-877-237-4371 / 609-399-0076
info@bergerrealty.com



Route 50 (County Blvd), Mays Landing, NJ, 08330

Price \$59,000.00

PROPERTY DETAILS



Total Rooms	
Bedrooms	0
Baths Full	0
Baths Half	0
Year Built	
Type	
Block Number	845
Listing #	578328
Taxes	1775.00

COMMENTS

Lot contains 5.66 acres with 400\ of frontage in RD-5 zone. Building can be set 120\ from road based on approvals. Great are to spread out and buil the home of your dreams....

PROPERTY FEATURES

CONTACT



Ask for Lauren Greiner
Berger Realty Inc
3160 Asbury Avenue, Ocean City
Call: 609-602-5960
Email to: lmg@bergerrealty.com

Scan to see Property page.



Berger Realty

Since 1926



Berger Realty, Inc.
3160 Asbury Avenue
Ocean City, NJ 08226
1-877-237-4371 / 609-399-0076
info@bergerrealty.com



Route 50 (County Blvd), Mays Landing, NJ, 08330

Price \$59,000.00

PROPERTY DETAILS



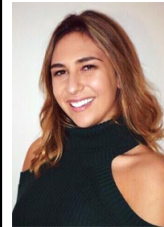
Total Rooms	
Bedrooms	0
Baths Full	0
Baths Half	0
Year Built	
Type	
Block Number	845
Listing #	578328
Taxes	1775.00

COMMENTS

Lot contains 5.66 acres with 400\ of frontage in RD-5 zone. Building can be set 120\ from road based on approvals. Great are to spread out and buil the home of your dreams....

PROPERTY FEATURES

CONTACT



Ask for Lauren Greiner
Berger Realty Inc
3160 Asbury Avenue, Ocean City
Call: 609-602-5960
Email to: lmg@bergerrealty.com

Scan to see Property page.

