



Berger Realty, Inc.  
3160 Asbury Avenue  
Ocean City, NJ 08226  
1-877-237-4371 / 609-399-0076  
info@bergerrealty.com



1422 Madison, Atlantic City, NJ, 08401

Price \$20,000.00



#### PROPERTY DETAILS

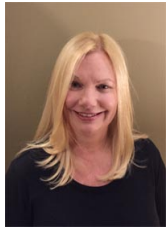
Total Rooms	
Bedrooms	0
Baths Full	0
Baths Half	0
Year Built	
Type	
Block Number	684
Listing #	576957
Taxes	320.00

#### COMMENTS

**VACANT LOT IN VENICE PARK COULD BE YOURS!!** Lot located in AC, zoned R-1, lot size is 30x75. Call today!...

#### PROPERTY FEATURES

#### CONTACT



Ask for Dawn Warren  
Berger Realty Inc  
3160 Asbury Avenue, Ocean City  
Call: 609-432-4966  
Email to: dew@bergerrealty.com

Scan to see Property page.



Berger Realty, Inc.  
3160 Asbury Avenue  
Ocean City, NJ 08226  
1-877-237-4371 / 609-399-0076  
info@bergerrealty.com



1422 Madison, Atlantic City, NJ, 08401

Price \$20,000.00



#### PROPERTY DETAILS

Total Rooms	
Bedrooms	0
Baths Full	0
Baths Half	0
Year Built	
Type	
Block Number	684
Listing #	576957
Taxes	320.00

#### COMMENTS

**VACANT LOT IN VENICE PARK COULD BE YOURS!!** Lot located in AC, zoned R-1, lot size is 30x75. Call today!...

#### PROPERTY FEATURES

#### CONTACT



Ask for Dawn Warren  
Berger Realty Inc  
3160 Asbury Avenue, Ocean City  
Call: 609-432-4966  
Email to: dew@bergerrealty.com

Scan to see Property page.

