

# Berger Realty

Since 1926



Ocean 17  
1670 Boardwalk  
Ocean City, NJ 08226  
609-391-0500

[oc17@BergerRealty.com](mailto:oc17@BergerRealty.com)



1422 Madison, Atlantic City, NJ, 08401

Price \$20,000.00

### PROPERTY DETAILS

Total Rooms	
Bedrooms	0
Baths Full	0
Baths Half	0
Year Built	
Type	
Block Number	684
Listing #	576957
Taxes	320.00



SJSRMLS

### COMMENTS

**VACANT LOT IN VENICE PARK COULD BE YOURS!!** Lot located in AC, zoned R-1, lot size is 30x75. Call today!...

### PROPERTY FEATURES

### CONTACT



Ask for Dylan Perry  
Berger Realty Inc  
1670 Boardwalk, Ocean City  
Call: 609-675-6737  
Email to: [dcp@bergerrealty.com](mailto:dcp@bergerrealty.com)

Scan to see Property page.



# Berger Realty

Since 1926



Ocean 17  
1670 Boardwalk  
Ocean City, NJ 08226  
609-391-0500

[oc17@BergerRealty.com](mailto:oc17@BergerRealty.com)



1422 Madison, Atlantic City, NJ, 08401

Price \$20,000.00

### PROPERTY DETAILS

Total Rooms	
Bedrooms	0
Baths Full	0
Baths Half	0
Year Built	
Type	
Block Number	684
Listing #	576957
Taxes	320.00



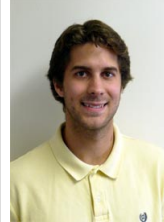
SJSRMLS

### COMMENTS

**VACANT LOT IN VENICE PARK COULD BE YOURS!!** Lot located in AC, zoned R-1, lot size is 30x75. Call today!...

### PROPERTY FEATURES

### CONTACT



Ask for Dylan Perry  
Berger Realty Inc  
1670 Boardwalk, Ocean City  
Call: 609-675-6737  
Email to: [dcp@bergerrealty.com](mailto:dcp@bergerrealty.com)

Scan to see Property page.

