

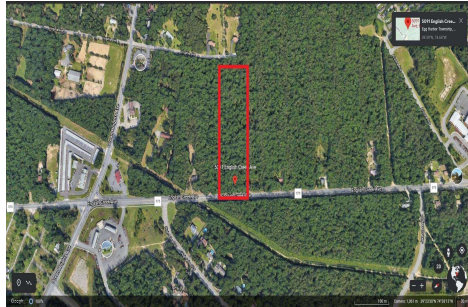


Berger Realty, Inc.
3160 Asbury Avenue
Ocean City, NJ 08226
1-877-237-4371 / 609-399-0076
info@bergerrealty.com



5091-5093 English Creek Avenue, Egg Harbor Township, NJ,
08234

Price \$950,000.00



PROPERTY DETAILS

| | |
|--------------|----------|
| Total Rooms | |
| Bedrooms | 0 |
| Baths Full | 0 |
| Baths Half | 0 |
| Year Built | |
| Type | |
| Block Number | 3226 |
| Listing # | 570778 |
| Taxes | 23000.00 |

COMMENTS

Approximately 8.9 acres of wooded land on English Creek Ave close to the corner of Ocean Heights Ave. Zoned NB Commercial. Close proximity to many business and residential areas. 400\ of road frontage. Great location for many business opportunities. 2 parcels spanning from English Creek Ave back to Virginia Ave....

PROPERTY FEATURES

CONTACT



Ask for Donald Edwards
Berger Realty Inc
3160 Asbury Avenue, Ocean City
Call: 954-913-4477
Email to: dwe@bergerrealty.com

Scan to see Property page.



Berger Realty, Inc.
3160 Asbury Avenue
Ocean City, NJ 08226
1-877-237-4371 / 609-399-0076
info@bergerrealty.com



5091-5093 English Creek Avenue, Egg Harbor Township, NJ,
08234

Price \$950,000.00



PROPERTY DETAILS

| | |
|--------------|----------|
| Total Rooms | |
| Bedrooms | 0 |
| Baths Full | 0 |
| Baths Half | 0 |
| Year Built | |
| Type | |
| Block Number | 3226 |
| Listing # | 570778 |
| Taxes | 23000.00 |

COMMENTS

Approximately 8.9 acres of wooded land on English Creek Ave close to the corner of Ocean Heights Ave. Zoned NB Commercial. Close proximity to many business and residential areas. 400\ of road frontage. Great location for many business opportunities. 2 parcels spanning from English Creek Ave back to Virginia Ave....

PROPERTY FEATURES

CONTACT



Ask for Donald Edwards
Berger Realty Inc
3160 Asbury Avenue, Ocean City
Call: 954-913-4477
Email to: dwe@bergerrealty.com

Scan to see Property page.

