

Berger Realty

Since 1928



Berger Realty, Inc.
3160 Asbury Avenue
Ocean City, NJ 08226
1-877-237-4371 / 609-399-0076
info@bergerrealty.com



Berger Realty

Since 1928

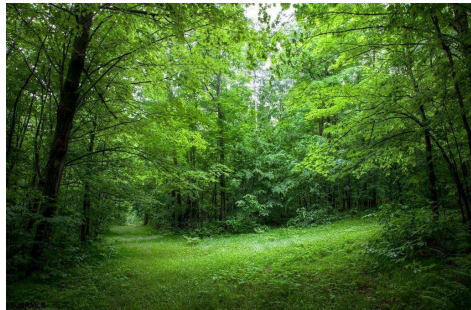


Berger Realty, Inc.
3160 Asbury Avenue
Ocean City, NJ 08226
1-877-237-4371 / 609-399-0076
info@bergerrealty.com



40 BUTTER ROAD, Upper Township, NJ, 08230

Price \$399,900.00



PROPERTY DETAILS

Total Rooms	
Bedrooms	0
Baths Full	0
Baths Half	0
Year Built	
Type	
Block Number	568
Listing #	570143
Taxes	3342.00

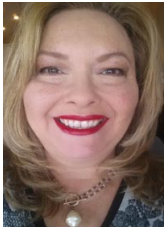
COMMENTS

1.9 ACRE COMMERCIAL AND INDUSTRIAL SITE IN A GREAT UPPER TOWNSHIP LOCATION OFF ROUTE 9 NEAR SHORE AREAS WITH PLANS AND APPROVALS FOR 7,200 SQ FT OFFICE AND WAREHOUSE BUILDINGS....

PROPERTY FEATURES

ParkingGarage
11 or More Spaces

CONTACT



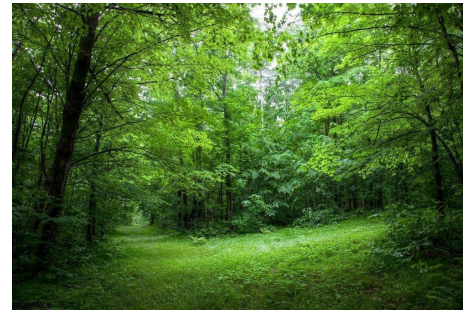
Ask for Theresa Maina
Berger Realty Inc
3160 Asbury Avenue, Ocean City
Call: 609-703-7725
Email to: tam@bergerrealty.com

Scan to see Property page.



40 BUTTER ROAD, Upper Township, NJ, 08230

Price \$399,900.00



PROPERTY DETAILS

Total Rooms	
Bedrooms	0
Baths Full	0
Baths Half	0
Year Built	
Type	
Block Number	568
Listing #	570143
Taxes	3342.00

COMMENTS

1.9 ACRE COMMERCIAL AND INDUSTRIAL SITE IN A GREAT UPPER TOWNSHIP LOCATION OFF ROUTE 9 NEAR SHORE AREAS WITH PLANS AND APPROVALS FOR 7,200 SQ FT OFFICE AND WAREHOUSE BUILDINGS....

PROPERTY FEATURES

ParkingGarage
11 or More Spaces

CONTACT



Ask for Theresa Maina
Berger Realty Inc
3160 Asbury Avenue, Ocean City
Call: 609-703-7725
Email to: tam@bergerrealty.com

Scan to see Property page.

