

Berger Realty

Since 1926



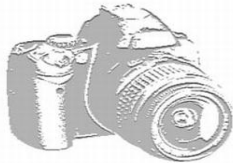
Berger Realty, Inc.
3160 Asbury Avenue
Ocean City, NJ 08226
1-877-237-4371 / 609-399-0076
info@bergerrealty.com



6523-27 6523-27 Black Horse Pike, Egg Harbor Township,
NJ, 08234

Price \$750,000.00

PHOTO NOT AVAILABLE



PROPERTY DETAILS

Total Rooms	
Bedrooms	0
Baths Full	0
Baths Half	0
Year Built	
Type	
Block Number	1901
Listing #	569420
Taxes	11222.00

COMMENTS

For sell three adjacent Lots as one parcel for the price of \$750,000. Each Lot is approximately 1 acre, The individual Lots are Lot 8 Block 1901, Lot 9 Block 1901 Lot 10 Block 1901. Are you looking for a prime location to establish your business in Egg Harbor Township, NJ? Look no further! We are excited to announce the availability of a large 3 acre lot on the highly cove...

PROPERTY FEATURES

CONTACT



Ask for Evelyn "Evie" Schweibinz
Berger Realty Inc
3160 Asbury Avenue, Ocean City
Call:
Email to: ems@bergerrealty.com

Scan to see Property page.



Berger Realty

Since 1926



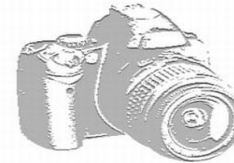
Berger Realty, Inc.
3160 Asbury Avenue
Ocean City, NJ 08226
1-877-237-4371 / 609-399-0076
info@bergerrealty.com



6523-27 6523-27 Black Horse Pike, Egg Harbor Township,
NJ, 08234

Price \$750,000.00

PHOTO NOT AVAILABLE



PROPERTY DETAILS

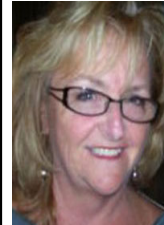
Total Rooms	
Bedrooms	0
Baths Full	0
Baths Half	0
Year Built	
Type	
Block Number	1901
Listing #	569420
Taxes	11222.00

COMMENTS

For sell three adjacent Lots as one parcel for the price of \$750,000. Each Lot is approximately 1 acre, The individual Lots are Lot 8 Block 1901, Lot 9 Block 1901 Lot 10 Block 1901. Are you looking for a prime location to establish your business in Egg Harbor Township, NJ? Look no further! We are excited to announce the availability of a large 3 acre lot on the highly cove...

PROPERTY FEATURES

CONTACT



Ask for Evelyn "Evie" Schweibinz
Berger Realty Inc
3160 Asbury Avenue, Ocean City
Call:
Email to: ems@bergerrealty.com

Scan to see Property page.

