

# Berger Realty

Since 1926



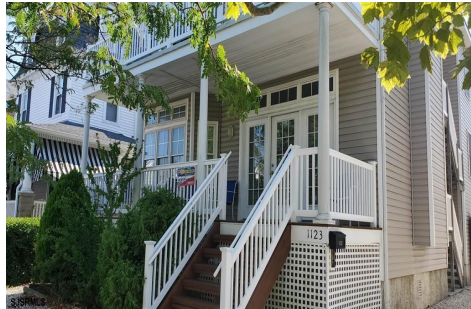
Berger Realty, Inc.  
55th & Haven Avenue  
Ocean City, NJ 08226  
609-399-0040

info@bergerrealty.com



1123 Central, 1, Ocean City, NJ, 08226

Price \$999,000.00



### PROPERTY DETAILS

Total Rooms	8
Bedrooms	4
Baths Full	2
Baths Half	0
Year Built	
Type	Condo
Block Number	1103
Listing #	567842
Taxes	5232.00

### COMMENTS

*Location, Location, Location...This tree lined street, convenient to Ocean City's famous boardwalk, is in a highly desirable location. Check out this 1st floor home featuring 4 bedrooms, 2 baths, front and rear decks, parking for 3, garage, gas log fireplace and extra large living area. As about perennial strong rental history....*

### PROPERTY FEATURES

Exterior	ParkingGarage	Heating	Cooling
Vinyl	One Car	Forced Air	Central
		Gas-Natural	
Water	Sewer		
Public Water	Public Sewer		

### CONTACT



Ask for James Monteleone  
Berger Realty Inc  
109 E 55th St., Ocean City  
Call:  
Email to: jfm@bergerrealty.com

Scan to see Property page.



# Berger Realty

Since 1926



Berger Realty, Inc.  
55th & Haven Avenue  
Ocean City, NJ 08226  
609-399-0040

info@bergerrealty.com



1123 Central, 1, Ocean City, NJ, 08226

Price \$999,000.00



### PROPERTY DETAILS

Total Rooms	8
Bedrooms	4
Baths Full	2
Baths Half	0
Year Built	
Type	Condo
Block Number	1103
Listing #	567842
Taxes	5232.00

### COMMENTS

*Location, Location, Location...This tree lined street, convenient to Ocean City's famous boardwalk, is in a highly desirable location. Check out this 1st floor home featuring 4 bedrooms, 2 baths, front and rear decks, parking for 3, garage, gas log fireplace and extra large living area. As about perennial strong rental history....*

### PROPERTY FEATURES

Exterior	ParkingGarage	Heating	Cooling
Vinyl	One Car	Forced Air	Central
		Gas-Natural	
Water	Sewer		
Public Water	Public Sewer		

### CONTACT



Ask for James Monteleone  
Berger Realty Inc  
109 E 55th St., Ocean City  
Call:  
Email to: jfm@bergerrealty.com

Scan to see Property page.

